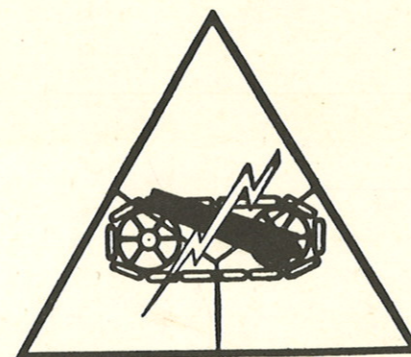


ARMORED DIVISION

ORGANIZATION CHARTS

T/O 17



REPRINTED BY
THE ARMOR SCHOOL LIBRARY
U.S. ARMY ARMOR CENTER, FORT KNOX, KY
1985

C/3

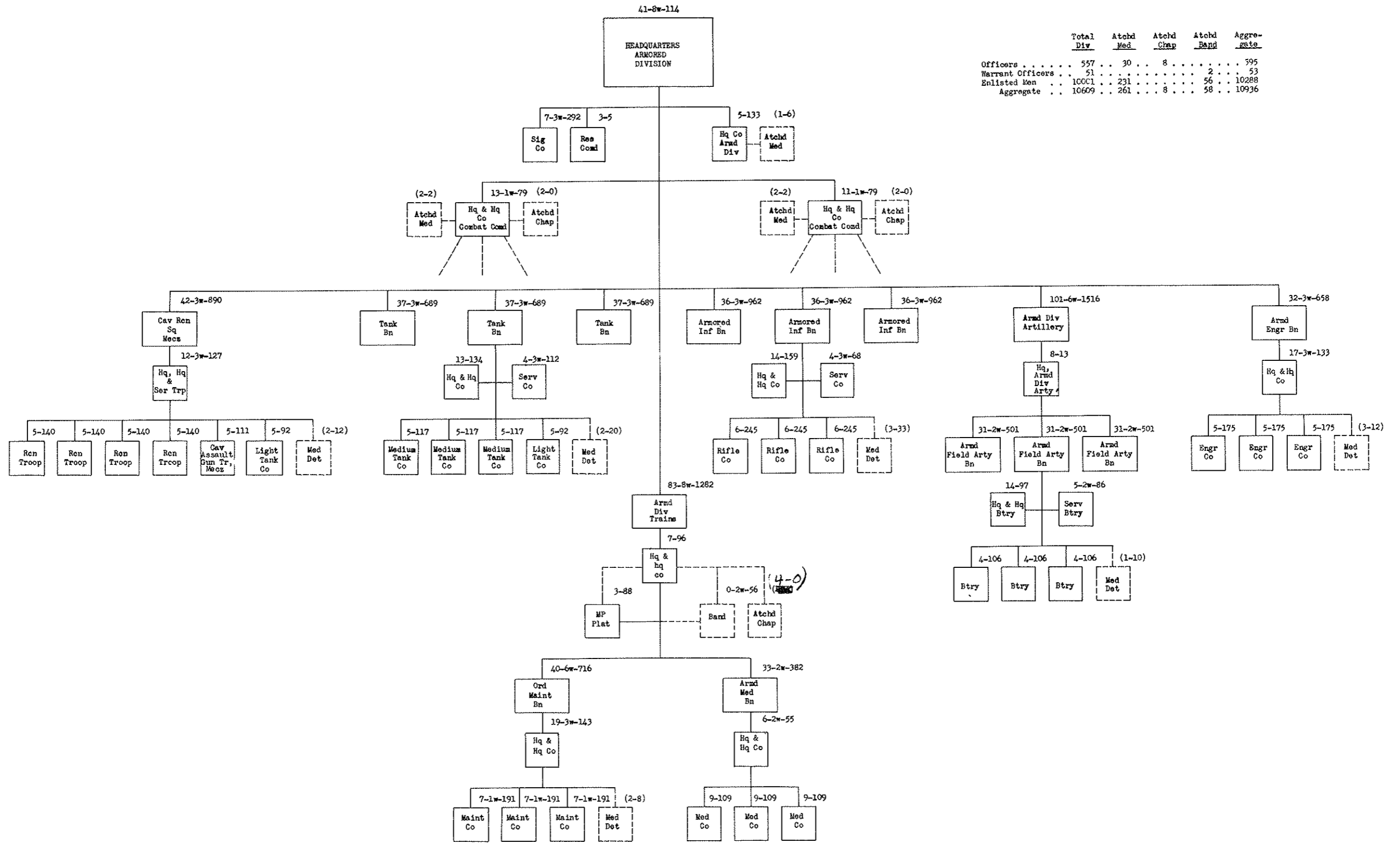
ARMORED DIVISION — Tables of Organization

INDEX

15 September 1943

T/O No.	TITLE	
17	Diagrammatic chart, Armored Division.....	1
17	Summary of personnel and equipment, Armored Division.....	2 & 3
17-1	Headquarters, Armored Division.....	4 & 5
17-2	Headquarters Company, Armored Division.....	6
17-30-1	Headquarters, Reserve Command, Armored Division.....	6
11-57	Armored Signal Company.....	7
17-20-1	Headquarters and Headquarters Company, Combat Command, Armored Division.....	8
2-25	Cavalry Reconnaissance Squadron, Mechanized.....	9
2-26	Headquarters, Headquarters and Service Troop, Cavalry Reconnaissance Squadron, Mechanized.....	10
2-27	Cavalry Reconnaissance Troop, Mechanized.....	11
2-28	Cavalry Assault Gun Troop, Mechanized.....	12
17-25	Tank Battalion.....	13
17-26	Headquarters and Headquarters Company, Tank Battalion.....	14
17-27	Medium Tank Company, Tank Battalion.....	15
17-17	Light Tank Company, Tank Battalion or Cavalry Reconnaissance Squadron, Mechanized.....	16
17-29	Service Company, Tank Battalion.....	17
7-25	Armored Infantry Battalion.....	18
7-26	Headquarters and Headquarters Company, Armored Infantry Battalion.....	19
7-27	Rifle Company, Armored Infantry Battalion.....	20
7-29	Service Company, Armored Infantry Battalion.....	21
6-160	Armored Division Artillery.....	22
6-160-1	Headquarters, Armored Division Artillery.....	23
6-166	Headquarters and Headquarters Battery, Armored Field Artillery Battalion.....	24
6-167	Battery, Armored Field Artillery Battalion.....	25
6-169	Service Battery, Armored Field Artillery Battalion.....	26
5-215	Armored Engineer Battalion.....	27
5-216	Headquarters and Headquarters Company, Armored Engineer Battalion.....	28
5-217	Company, Armored Engineer Battalion.....	29
17-60	Armored Division Trains.....	30
17-60-1	Headquarters and Headquarters Company, Armored Division Trains.....	31
19-117	Military Police Platoon, Armored Division.....	32
9-65	Ordnance Maintenance Battalion, Armored Division.....	33
9-66	Headquarters and Headquarters Company, Ordnance Maintenance Battalion, Armored Division.....	34
9-67	Maintenance Company, Ordnance Maintenance Battalion, Armored Division.....	35
8-75	Medical Battalion, Armored.....	36
8-76	Headquarters and Headquarters Company, Medical Battalion, Armored.....	37
8-77	Company, Medical Battalion, Armored.....	38
	Radio channels of communication, Series "C".....	39 & 40

ARMORED DIVISION



	Total Div	Atch'd Med	Atch'd Chap	Atch'd Band	Aggregate
Officers	557	30	8		595
Warrant Officers	51			2	53
Enlisted Men	10001	231		56	10288
Aggregate	10609	261	8	58	10936

ARMORED DIVISION

	1	2	3	4	5	6	7	8	9	10	11	12	13	14	15	16	17	18	19	20	21	22	23
		Division headquarters (7/0 17-1)	Headquarters company (7/0 17-2)	2 Headquarters and headquarters companies, combat command (each) (7/0 17-20-1)	Armored reserve command (7/0 17-30-1)	Armored signal company (7/0 11-57)	Cavalry reconnaissance squadron, mechanized (7/0 2-25)	3 Tank battalions (each) (7/0 17-25)	3 Armored Infantry battalions (each) (7/0 7-25)	Headquarters armored division artillery (7/0 6-10-1)	3 Armored field artillery battalions (each) (7/0 6-15)	Total artillery	Armored engineer battalion (7/0 5-215)	Headquarters and headquarters company (7/0 17-60-1)	Military police platoon (7/0 19-17)	Ordnance maintenance battalion (7/0 9-65)	Medical battalion armored (7/0 8-75)	Total trains	Total division	Attached medical	Attached chaplain	Attached band	Aggregate
52	0 Launcher, rocket, AT		14	8		24	37	35	74	40	120	29	4	1	35			40	607				607
53	0 Mortar, 60mm					36			9										63				63
54	0 Mortar, 81mm					3	2	6	1	2	6								30				30
55	0 Pistol, automatic	18	1	5	3	1	3	3	3	6	5	21	3	3	1	5		9	87				87
56	0 Rifle, M1		9			120	20	469					434	6				6	2036				2036
57	0 Rifle, M1903A4							9											27				27
58	0 Tank, light, with armament		3	3		17	17												77				77
59	0 Tank, medium, with armament						53			3	9								168				168
60	0 Tank, medium, with armament (105mm how)						6												18				18
61	0 Trailer, ammunition, M10		1	1		14	17	8		33	99	2							192				192
62	0 Trailer, 1-ton			2									4					4	8				8
63	0 Trailer, 1-ton		3	2		10	34	26	21	20	60	24	9		66	17	92	368	10				378
64	0 Trailer, 1-ton, 250-gallon water tank																	6	6				6
65	0 Truck, 1/2-ton		12	9		22	106	22	23	21	63	25	16	19	23	10	68	449	13				462
66	0 Truck, 3/4-ton, command							1	1	2	6	1	3		3	8	14	27					27
67	0 Truck, 3/4-ton, weapons carrier		2					1	1	1	3	6	7	3	16	7	33	50	3				53
68	0 Truck, 2 1/2-ton, artillery repair														3	3	3	3	3				3
69	0 Truck, 2 1/2-ton, automotive repair, Load "A"														3	3	3	3	3				3
70	0 Truck, 2 1/2-ton, automotive repair, Load "B"														3	3	3	3	3				3
71	0 Truck, 2 1/2-ton, cargo		4	2		19	20	39	21	25	75	27	9		67	17	93	422					422
72	0 Truck, 2 1/2-ton, dump											18							18				18
73	0 Truck, 2 1/2-ton, electrical repair														3		3	3	3				3
74	0 Truck, 2 1/2-ton, instrument repair														3		3	3	3				3
75	0 Truck, 2 1/2-ton, machine shop, Load "A"														4		4	4	4				4
76	0 Truck, 2 1/2-ton, machine shop, Load "B"														1		1	1	1				1
77	0 Truck, 2 1/2-ton, machine shop, Load "C"														1		1	1	1				1
78	0 Truck, 2 1/2-ton, machine shop, Load "D"														1		1	1	1				1
79	0 Truck, 2 1/2-ton, small arms repair				2										3		3	3	5				5
80	0 Truck, 2 1/2-ton, welding														4		4	4	4				4
81	0 Truck, 4-ton, cargo														3		3	3	3				3
82	0 Truck, heavy wrecker														11		11	25	25				25
83	0 Truck, trailer, 40-ton, tank recovery														9		9	9	9				9
84	0 Vehicle, tank recovery, without armament																		30				30
85	S Radio set, including		27	16		38	190	111	44	44	132	90	10		21	18	49	963	12				975
86	SR-599					(e6)													(e6)				(e6)
87	SR-506		(9)	(7)		(11)	(56)	(3)	(3)	(10)	(30)	(6)	(2)		(6)	(6)	(14)	(158)					(158)
88	SR-508		(5)	(3)		(54)	(7)	(2)	(2)	(7)	(21)	(1)			(1)		(1)	(114)					(114)
89	SR-509		(2)				(3)	(3)	(3)	(2)	(6)							(26)					(26)
90	SR-510		(6)	(4)		(19)	(53)	(20)	(31)	(6)	(18)	(21)	(7)		(11)	(2)	(20)	(298)	(12)				(310)
91	SR-528		(5)	(2)		(2)	(15)	(36)	(4)	(17)	(51)	(3)			(4)	(10)	(14)	(214)					(214)
92	SR-538					(12)	(42)	(1)	(1)	(2)	(6)							(147)					(147)
93	W Apparatus, decontaminating, power driven														3		3	3	3				3

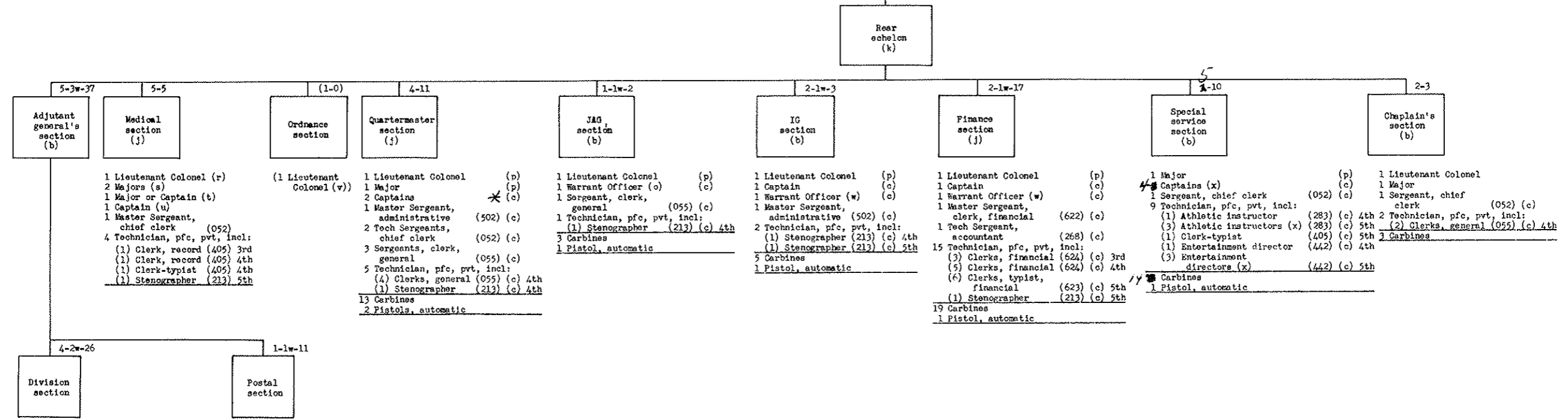
Notes:

- a - In one headquarters, combat command only; 1 combat command commanded by brigadier general, 1 commanded by colonel.
- b - Includes 1 aide; authorized only in headquarters, combat command having brigadier general.
- c - Less 2 officers (aides) in combat command not authorized a brigadier general.
- d - Less 2 in combat commands not authorized a brigadier general.
- e - Includes shelter H017 and trailer K-52.

HEADQUARTERS ARMORED DIVISION

41-8w-114

25-6w-88



Summary of personnel:

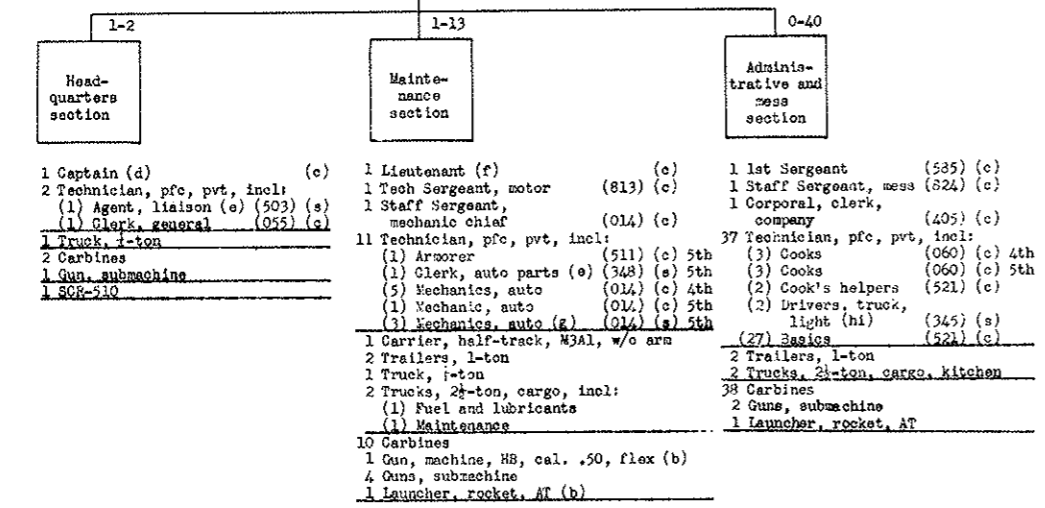
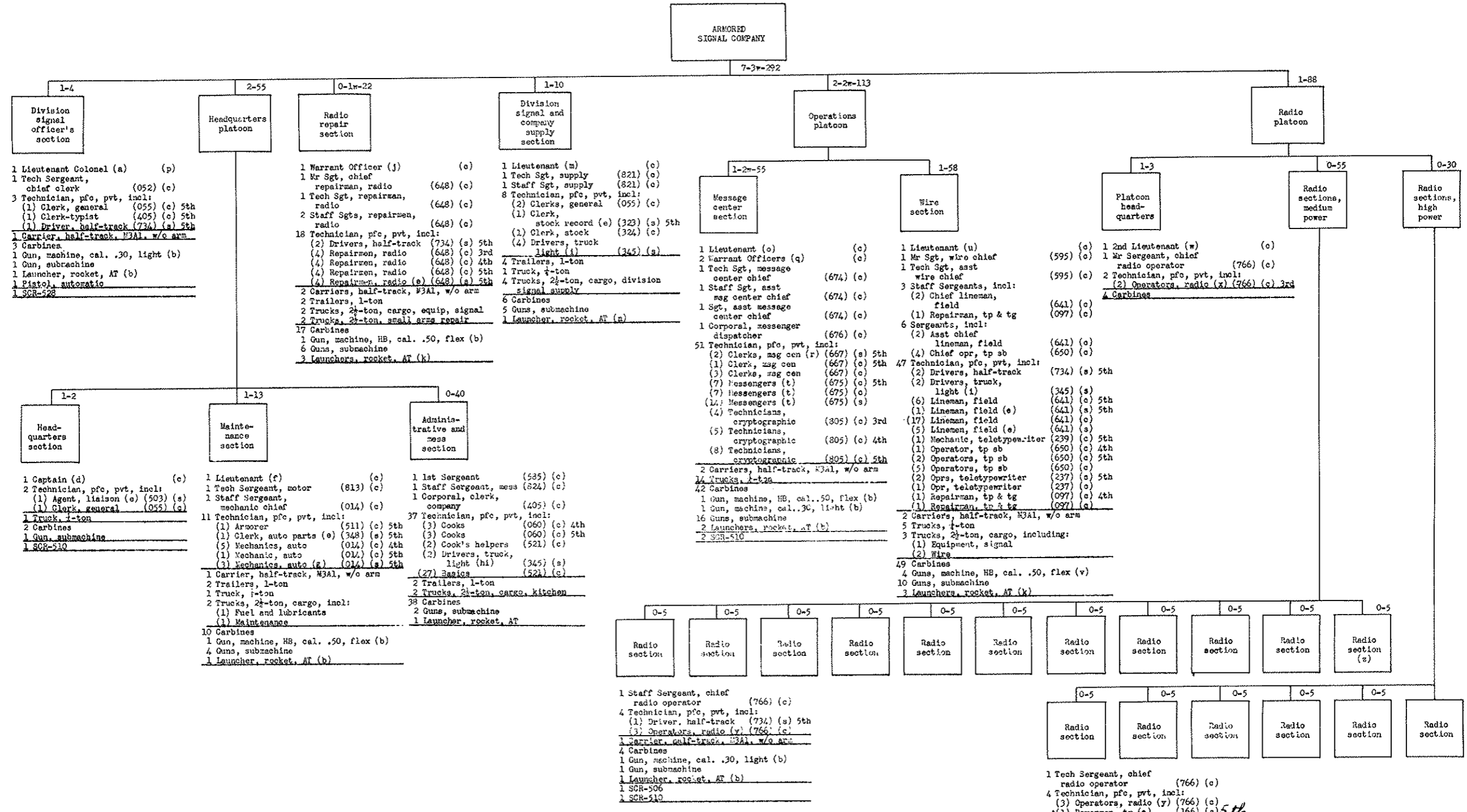
	Forward echelon	Rear echelon	Total
Major General	1		1
Colonel	1		1
Lieutenant Colonel	5	7	12
Major	3	6	9
Major or Captain		1	1
Captain	5	9	14
1st Lieutenant	1	2	3
Total commissioned	16	25	41
Warrant Officer	2	6	8
Master Sergeant	4	5	9
Tech Sergeant	1	7	8
Staff Sergeant	6	1	7
Sergeant	3	7	10
Corporal	1	1	2
Technician, grade 3		10	10
Technician, grade 4	8	31	39
Technician, grade 5	3	24	27
Private first class		2	2
Total enlisted	26	88	114
Aggregate	44	119	163

Summary of weapons:

	Fwd echelon	Rear echelon	Total
0 Carbine	34	99	133
0 Pistol, automatic	10	8	18

Notes:

- a - Transportation and radio operators provided in transportation platoon, headquarters company.
 - b - Enlisted personnel, branch immaterial.
 - c - Armed with carbine.
 - d - One radio operator available for this section from signal company.
 - e - General staff corps.
 - f - Liaison officers; branch immaterial.
 - g - Clerical, general.
 - h - Radio operator for this section in commanding general and staff section, transportation platoon, headquarters company.
 - i - Motor transport, general.
 - j - Enlisted personnel from respective service.
 - k - Transportation provided in transportation platoon, headquarters company, armored division trains.
 - m - 1 to be classification and assignment officer.
 - n - Clerical, general; 1 chief clerk, 1 records clerk.
 - o - Clerical, general.
 - p - Armed with pistol.
 - q - Army mail clerks; money order, stamps and registry.
 - r - Division surgeon.
 - s - 1 division dental officer; 1 division medical inspector.
 - t - Division neuropsychiatrist.
 - u - Medical administrative corps.
 - v - Division ordnance officer in addition to duties as unit commander.
 - w - Not included in totals of this headquarters.
 - x - 2 for combat commands, 1 *orientation officer*.
- * *is in transportation platoon*



Summary of personnel:

Lieutenant Colonel	1
Captain	1
1st Lieutenant	3
2nd Lieutenant	2
Total commissioned	7
Warrant Officer	3
Mr Sergeant	3
1st Sergeant	1
Tech Sergeant	12
Staff Sergeant	20
Sergeant	7
Corporal	2
Technician, grade 3	21
Technician, grade 4	32
Technician, grade 5	13
Private first class	28
Privates	59
Basic (included)	(27)
Total enlisted	292
Aggregate	302

Summary of vehicles, weapons and radios:

0 Carbine	239
0 Carrier, half-track, M3A1, w/o arm	19
0 Gun, machine, HB, cal. .50, flex	13
0 Gun, machine, cal. .30, light	13
0 Gun, submachine	62
0 Launcher, rocket, AT	24
0 Pistol, automatic	1
0 Trailer, 1-ton	10
0 Truck, 1-ton	22
0 Truck, 2 1/2-ton, cargo, including:	29
Division signal supply	(4)
Equipment, signal	(3)
Fuel and lubricants	(1)
Kitchen	(2)
Maintenance	(1)
Radio	(6)
Wire	(2)
0 Truck, 2 1/2-ton, small arms repair	2

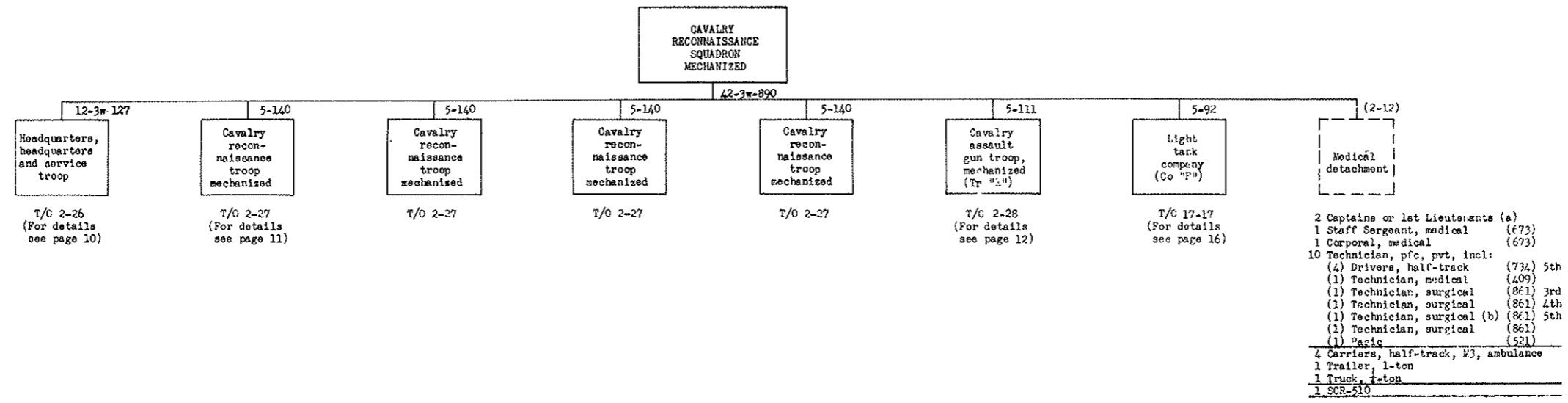
3 Radio set, incl:	38
SCR-399 (d)	(6)
SCR-506	(11)
SCR-510	(19)
SCR-528	(2)

Notes:

- a - Division signal officer (0210).
- b - Mounted or carried on half-track.
- c - Armed with carbine.
- d - Signal officer, general (0210).
- e - Drives truck.
- f - Motor officer (0601).
- g - 1 drives truck, 1-ton; 1 drives truck, 2 1/2-ton, 1 drives half-track.
- h - Also cooks' helper.
- i - Of the 8 truck drivers, light, in this company, 4 are technician, grade 5, 4 are pfc or Pvt.
- j - Radio maintenance and repair (764).
- k - 2 carried on half-tracks; 1 carried on 2 1/2-ton truck.
- m - Supply officer (4401).
- n - Mounted or carried on truck, 2 1/2-ton.
- o - Message center officer (0221).
- p - Armed with pistol.
- q - Message center (0221).
- r - Drives half-tracks.
- s - Armed with gun, submachine.

1 Tech Sergeant, chief radio operator (766) (c)
4 Technician, pfc, Pvt, incl:
(1) Driver, half-track (734) (s) 5th
(3) Operators, radio (y) (766) (c)
(1) Powerman, tp (e) (166) (s) 5th
1 Truck, 2 1/2-ton, cargo, radio
4 Carbines
1 Gun, machine, HB, cal. .50, flex (u)
1 Gun, submachine
1 Launcher, rocket, AT (e)
1 SCR-399 (d)
1 SCR-510

- t - Drives trucks, 1-ton and serve as messengers, motor and messengers, dismounted as required.
- u - Telephone and telegraph officer, field line construction (0420).
- v - 2 mounted on truck, 2 1/2-ton; 2 mounted on half-tracks.
- w - Radio officer (0501).
- x - 1 for commanding general's radio; 1 for chief of staff's radio.
- y - Of the 51 radio operators in the radio sections, medium power and radio sections, high power, 11 are technician, grade 3, 13 are technician, grade 4 and 27 are technician, grade 5.
- z - This station for use of G-3; half-track equipped with SCR-528 in lieu of SCR-510.
- * - In 1 section only, carried on truck, 2 1/2-ton.
- β - Includes shelter, HQ17 and trailer, K-52.



Summary of personnel:

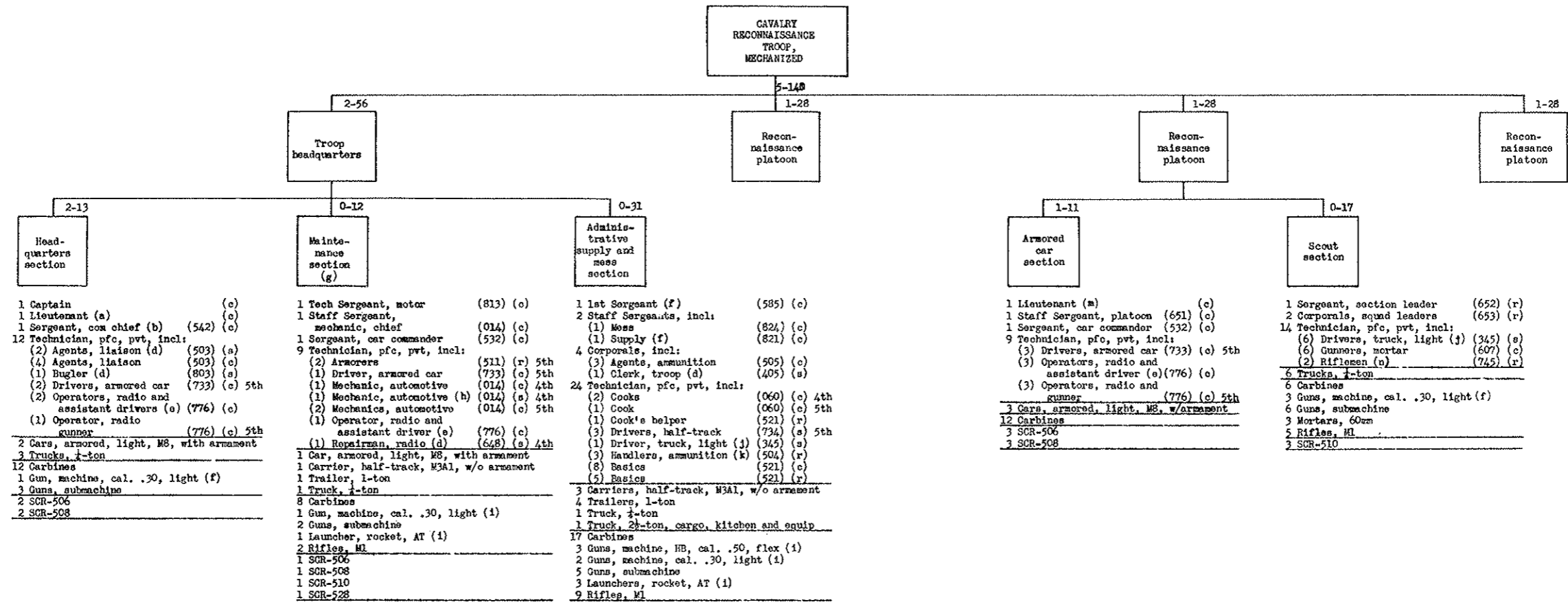
	Hq, Hq and Serv Troop	4 Cav Rcn Troops Mech (each)	Cav Assault Gun Troop Mech	Light Tank Co	Total Sq	Atchd Med	Aggregate
Lieutenant Colonel	1				1		1
Major	2				2		2
Captain	5	1	1	1	11		11
Captain or 1st Lieutenant						2	2
1st Lieutenant	3	2	2	2	15		15
2nd Lieutenant	1	2	2	2	13		13
Total commissioned	12	5	5	5	42	2	44
Warrant Officer	3				3		3
Master Sergeant	2				2		2
1st Sergeant	1	1	1	1	7		7
Technical Sergeant	6	1	1	1	12		12
Staff Sergeant	6	6	6	5	41	1	42
Sergeant	6	8	13	11	62		62
Corporal	3	10	10	2	55	1	56
Technician, grade 3						1	1
Technician, grade 4	26	12	9	14	97	1	98
Technician, grade 5	43	40	19	16	238	5	243
Private first class	12	25	21	17	150	1	151
Private	22	37	31	25	226	2	228
Basic (included)	(11)	(17)	(10)	(8)	(81)	(1)	(82)
Total enlisted	127	140	111	92	890	12	902
Aggregate	142	145	116	97	935	14	949

Summary of vehicles, weapons and radios:

	Hq, Hq and Serv Troop	4 Cav Rcn Troops Mech (each)	Cav Assault Gun Troop Mech	Light Tank Co	Total Sq	Atchd Med	Aggregate
0 Car, armored, light, M3, with armament	4	12			52		52
0 Carbines	108	91	78	24	574		574
0 Carriage, motor, 75mm howitzer, M3, w/arm.		8			8		8
0 Carrier, half-track, M3A1, ambulance						4	4
0 Carrier, half-track, M3A1, w/o armament	5	4	10	1	32		32
0 Gun, machine, cal. .30, light	9	13	6	1	68		68
0 Gun, machine, M3, cal. .50, flex	7	3	7	3	29		29
0 Gun, submachine	31	28	22	73	238		238
0 Launcher, rocket, AT	8	4	11	4	37		37
0 Mortar, 60mm		9			36		36
0 Mortar, 81mm	1		1	1	3		3
0 Pistol, automatic	3				3		3
0 Rifle, M1		26	16		120		120
0 Tank, light, with armament				17	17		17
0 Trailer, ammunition, M10	2		12		14		14
0 Trailer, 1-ton	12	5	1	1	34	1	35
0 Truck, 1-ton	10	23	2	2	106	1	107
0 Truck, 2 1/2-ton, cargo	14	1	1	1	20		20
0 Truck, heavy wrecker	1				1		1
0 Vehicle, tank recovery, without armament	1		1	1	3		3
S Radio set, including:	19	35	13	21	190	1	191
SCR-506	(7)	(12)		(1)	(56)		(56)
SCR-508	(5)	(12)		(1)	(54)		(54)
SCR-510	(3)	(10)	(8)	(2)	(53)	1	(54)
SCR-528	(3)	(1)	(1)	(7)	(15)		(15)
SCR-538	(1)		(1)	(10)	(12)		(12)

Notes:

- a - To be furnished only as required and available within the continental limits of the United States. Will be furnished prior to departure for overseas duty.
 - b - Drives truck, 1-ton.
- Cavalry reconnaissance squadron, mechanized is shown as organized when assigned to an armored division.



Summary of personnel:

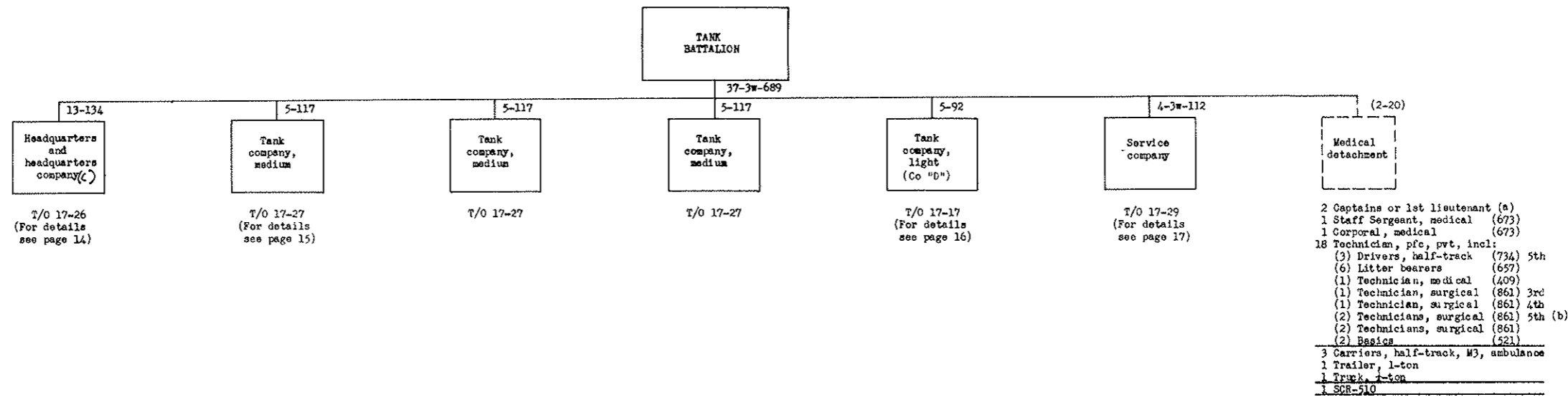
Captain	1
1st Lieutenant	2
2nd Lieutenant	2
Total commissioned	5
1st Sergeant	1
Tech Sergeant	1
Staff Sergeant	6
Sergeant	8
Corporal	10
Technician, grade 4	12
Technician, grade 5	40
Private first class	25
Private	37
Basic, included	(13)
Total enlisted	140
Aggregate	145

Summary of vehicles, weapons and radios:

0 Car, armored, light, M8, with armament	12
0 Carbine	91
0 Carrier, half-track, M3A1, without armament	4
0 Gun, machine, cal. .30, light	13
0 Gun, machine, M8, cal. .50, flexible	3
0 Gun, submachine	28
0 Launcher, rocket, AT	4
0 Mortar, 60mm	9
0 Rifle, M1	26
0 Trailer, 1-ton	5
0 Truck, 1-ton	23
0 Truck, 2 1/2-ton, cargo, kitchen and equipment	1
8 Radio set, including	35
SCR-506	(12)
SCR-508	(12)
SCR-510	(10)
SCR-528	(1)

Notes:

- a - Executive and motor officer.
- b - Armored car gunner in addition to other duties.
- c - Armed with carbine.
- d - Drives truck, 1-ton.
- e - Of 12 radio operators and assistant drivers in this troop 7 are technician, grade 4 and 5 are technician, grade 5.
- f - Mounted on truck, 1-ton.
- g - Mechanics from this section reinforce reconnaissance platoons as required.
- h - Drives half-track.
- i - Mounted or carried on half-track.
- j - Of 19 truck drivers, light, in this troop 5 are technician, grade 5, 14 are private first class or private.
- k - Also machine gunners.
- m - Mounted in armored car or other vehicle of the platoon as required.
- n - Also operate radios.
- r - Armed with rifle.
- o - Armed with gun, submachine.



Summary of personnel:

	Hq and hq co (C)	3 Medium tank co's (each)	Light tank co	Service company	Total bn (C)	Atchd medical	Aggregate (C)
Lieutenant Colonel	1				1		1
Major	2				2		2
Captain	4	1	1	2	10		10
Captain or 1st Lieutenant						2	2
1st Lieutenant	3	2	2	1	12		12
2nd Lieutenant	3	2	2	1	12		12
Total commissioned	13	5	5	4	37	2	39
Warrant Officer				3	3		3
Master Sergeant	1			1	2		2
1st Sergeant	1	1	1	1	6		6
Technical Sergeant	3	1	1	3	10		10
Staff Sergeant	6	5	5	6	32	1	33
Sergeant	11	12	11	2	60		60
Corporal	11	20	2	2	75	1	76
Technician, grade 3						1	1
Technician, grade 4	12	15	13	18	88	1	89
Technician, grade 5	24	14	15	35	116	5	121
Private first class	26	19	18	17	118	5	123
Private	39	30	26	27	182	6	188
Basic (included)	(13)	(11)	(8)	(10)	(64)	(2)	(66)
Total enlisted	134	117	92	112	689	20	709
Aggregate	147	122	97	119	729	22	751

Summary of vehicles, weapons and radios:

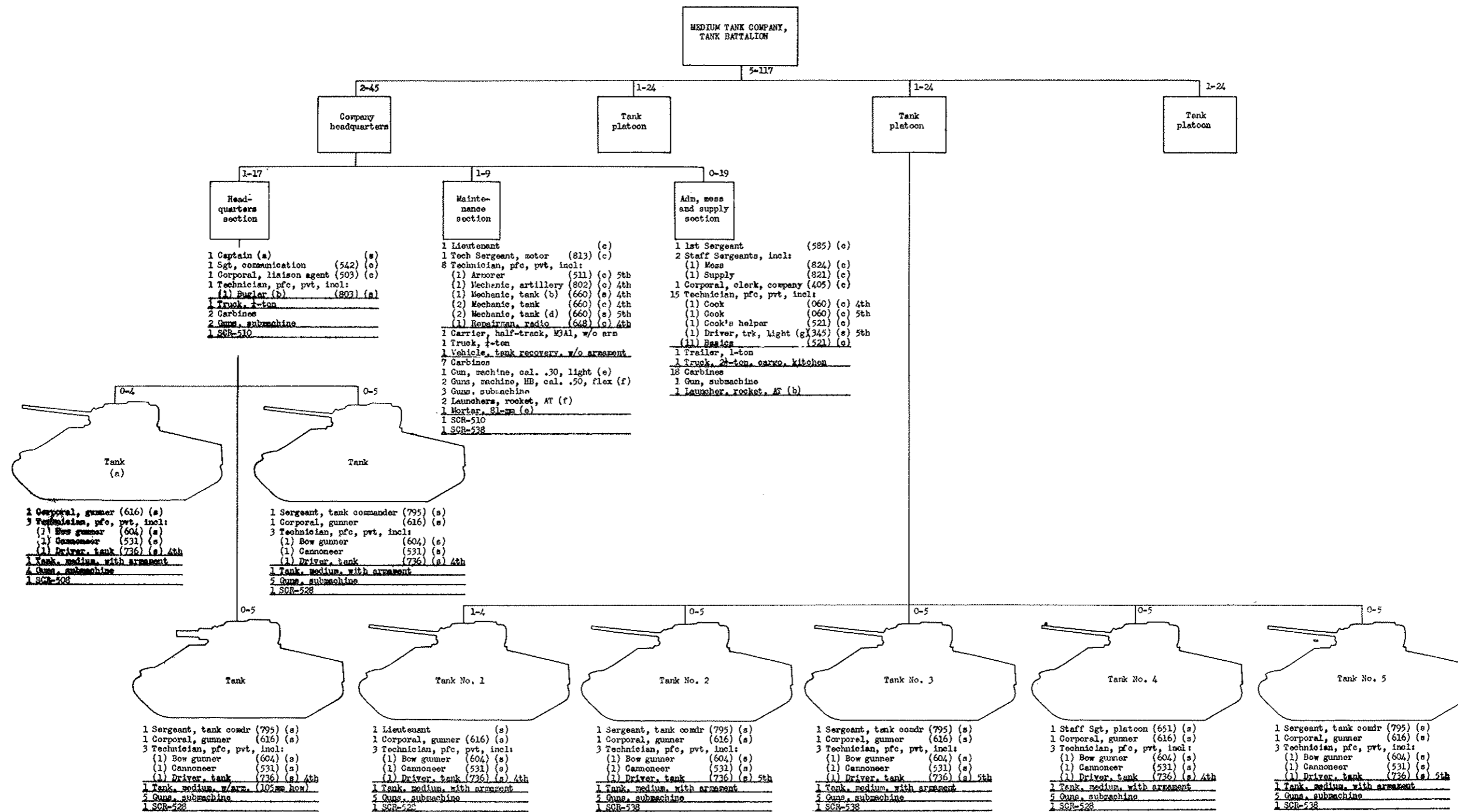
	Hq and hq co	3 Medium tank co's (each)	Light tank co	Service company	Total bn (C)	Atchd medical	Aggregate (C)
O Carbine	77	27	24	75	257		257
O Carrier, half-track, M3A1, without armament	8	1	1	1	13		13
O Carrier, half-track, M3, ambulance						3	3
O Carrier, 81mm mortar, half-track, M21, w/arm	3				3		3
O Gun, machine, HB, cal. .50, flex	5	2	3	12	26		26
O Gun, machine, cal. .30, light	3	1	1	11	18		18
O Gun, submachine	47	95	73	44	449		449
O Launcher, rocket, AT	12	3	2	12	35		35
C Mortar, 81mm		1	1	2	6		6
O Pistol, automatic	3				3		3
O Rifle, M1	20				20		20
O Tank, light, with armament			17		17		17
O Tank, medium, with armament	2	17			53		53
O Tank, medium, with armament (105mm howitzer)	3	1			6		6
O Trailer, 1-ton	2	1	1	20	26	1	27
O Trailer, ammunition, M10	4			13	17		17
O Truck, 1-ton	11	2	2	3	22	1	23
O Truck, 3/4-ton, command				1	1		1
O Truck, 3/4-ton, weapons carrier				1	1		1
O Truck, 2 1/2-ton, cargo	1	1	1	34	39		39
O Truck, heavy wrecker				2	2		2
O Vehicle, tank recovery, without armament		1	1	2	6		6
S Radio set, incl:	22	21	20	6	111	1	112
SCR-506	(2)			(1)	(3)		(3)
SCR-508	(3)	(1)	(1)		(7)		(7)
SCR-509	(3)				(3)		(3)
SCR-510	(10)	(2)	(2)	(2)	(20)	(1)	(21)
SCR-528	(4)	(8)	(7)	(1)	(36)		(36)
SCR-538		(10)	(10)	(2)	(42)		(42)

Notes:

- a - To be furnished only as required and available within the continental limits of the United States. Will be furnished prior to departure for overseas duty.
- b - 1 Drives 1-ton truck.

c FOR TANK BN NOT IN A.D.
ADD. OF PERS + EQUIP. FOR USE OF ART. OBS.

- 1. CPl
- 1 TECH GR. 5
- 1. PFC
- 1 PVT
- 1 TANK, 105MM W/ARM
- 1 GUN: 105MM
- 1 SCR-508



Summary of personnel:

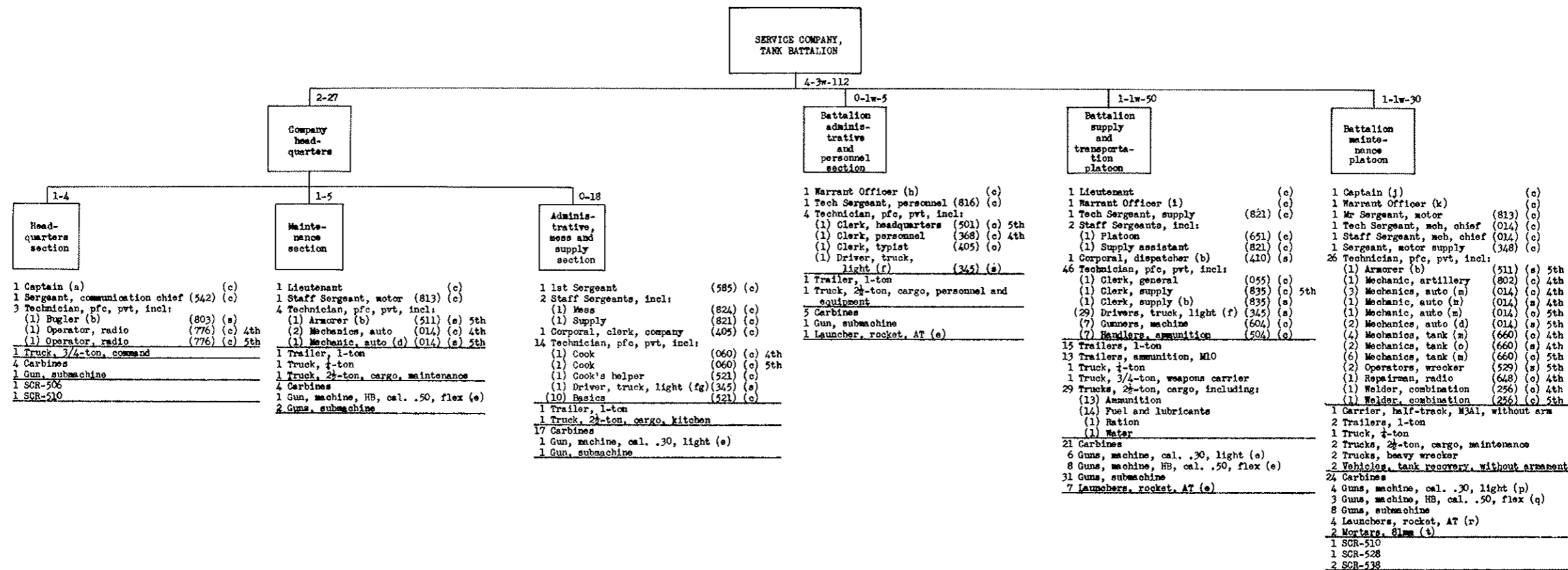
Captain	1
First Lieutenant	2
Second Lieutenant	2
Total commissioned	5
First Sergeant	1
Technical Sergeant	1
Staff Sergeant	5
Sergeant	12
Corporal	20
Technician, grade 4	15
Technician, grade 5	14
Private first class	19
Private	30
Basic (included)	(11)
Total enlisted	117
Aggregate	122

Summary of vehicles, weapons and radios:

0 Carbines	27
0 Carrier, half-track, M3A1, w/o armament	1
0 Gun, machine, cal. .30, light	1
0 Gun, machine, HB, cal. .50, flex	2
0 Gun, submachine	95
0 Launcher, rocket, AT	3
0 Mortar, 81-mm	1
0 Tank, medium, w/armament (105mm howitzer)	1
0 Tank, medium, w/armament	17
0 Trailer, 1-ton	1
0 Truck, 1-ton	2
0 Truck, 2 1/2-ton, cargo, kitchen	1
0 Vehicle, tank recovery, w/o armament	1
3 Radio set, incl:	21
SCR-508	(1)
SCR-510	(2)
SCR-528	(8)
SCR-538	(10)

Notes:

- a - Space provided in tank for company commander.
- b - Drives truck, 1-ton.
- c - Armed with carbine.
- d - 1 drives half-track; 1 drives vehicle, tank recovery.
- e - Mounted on vehicle, tank recovery.
- f - 1 mounted or carried on half-track; 1 mounted or carried on vehicle, tank recovery.
- g - Also cook's helper.
- h - Carried on truck, 2 1/2-ton.
- s - Armed with submachine gun.



Summary of personnel:

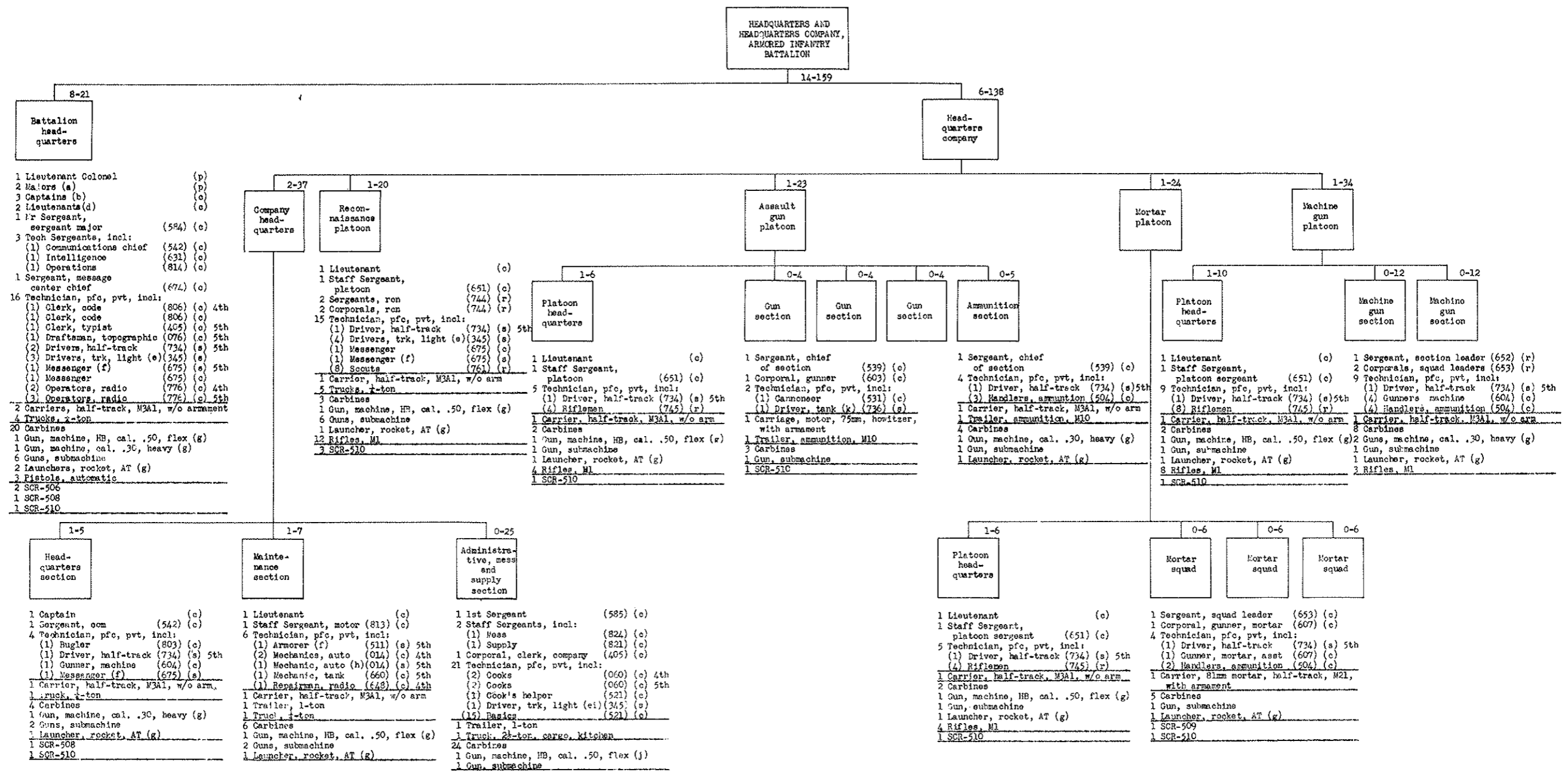
Captain	2
1st Lieutenant	1
2nd Lieutenant	1
Total commissioned	4
Warrant Officer	3
Master Sergeant	1
1st Sergeant	1
Tech Sergeant	3
Staff Sergeant	6
Sergeant	2
Corporal	2
Technician, grade 4	18
Technician, grade 5	35
Private first class	17
Private	27
Basic (included)	(10)
Total enlisted	112
Aggregate	119

Summary of vehicles, weapons and radios:

0 Carbine	75
0 Carrier, half-track, M3A1, w/o armament	1
0 Gun, machine, cal. .30, light	11
0 Gun, machine, HB, cal. .50, flex	12
0 Gun, submachine	44
0 Launcher, rocket, AT	12
0 Mortar, 81mm	2
0 Trailer, 1-ton	20
0 Trailer, ammunition, M10	13
0 Truck, 1-ton	3
0 Truck, 3/4-ton, command	1
0 Truck, 3/4-ton, weapons carrier	1
0 Truck, 2 1/2-ton, cargo, including:	34
Ammunition	(13)
Fuel and lubricants	(14)
Kitchen	(1)
Maintenance	(3)
Personnel and equipment	(1)
Ration	(1)
Water	(1)
0 Truck, heavy wrecker	2
0 Vehicle, tank recovery, w/o armament	2
S Radio set, incl:	6
SCR-506	(1)
SCR-510	(2)
SCR-528	(1)
SCR-538	(2)

Notes:

- a - Assistant S-4 in addition to other duties.
- b - Drives truck, 1-ton, or 3/4-ton.
- c - Armed with carbine.
- d - Drives truck, 2 1/2-ton.
- e - Mounted or carried on truck, 2 1/2-ton.
- f - Of 31 drivers, truck, light, in this company, 16 are technician, grade 5, 15 are privates, first class and privates.
- g - Also cook's helper.
- h - Clerical, general; personnel officer.
- i - Supply, general; assistant S-4.
- j - Battalion motor officer.
- k - Motor transport, general.
- m - 1 to have additional training as rigger (189).
- n - Drives half-track.
- o - Drive recovery vehicles.
- p - 1 mounted on heavy wrecker; 1 mounted on 2 1/2-ton truck; 2 mounted on recovery vehicles.
- q - 1 mounted on half-track; 2 in recovery vehicle.
- r - 1 carried on half-track; 1 in 2 1/2-ton truck; 2 in recovery vehicles.
- s - Armed with submachine gun.
- t - Mounted on recovery vehicles.



Summary of personnel:

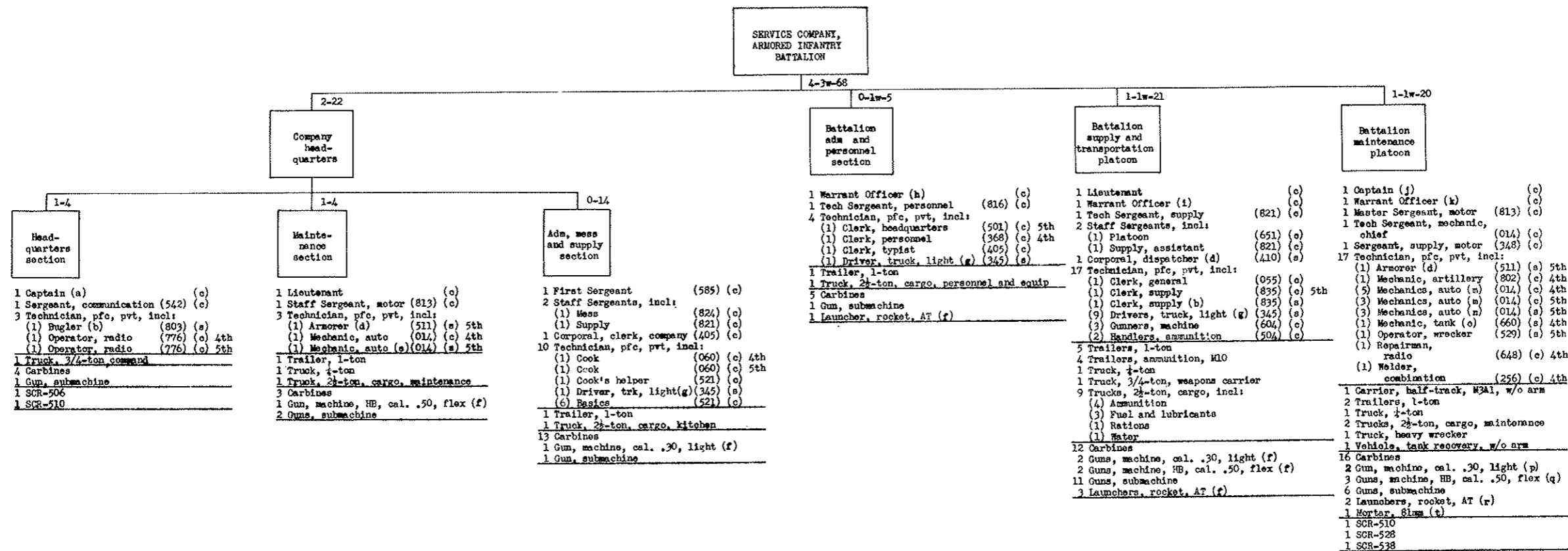
Lieutenant Colonel	1
Major	2
Captain	4
First Lieutenant	4
Second Lieutenant	3
Total commissioned	14
Master Sergeant	1
First Sergeant	1
Tech Sergeant	3
Staff Sergeant	7
Sergeant	13
Corporal	13
Technician, grade 4	10
Technician, grade 5	27
Private first class	35
Private	49
Basic (included)	(15)
Total enlisted	159
Aggregate	173

Summary of vehicles, weapons and radios:

0 Carbine	107
0 Carriage, motor, 75mm howitzer, with armament	3
0 Carrier, half-track, M3A1, without armament	11
0 Carrier, 81mm mortar, half-track, M21, w/armament	3
0 Gun, machine, HB, cal. .50, flex	7
0 Gun, machine, cal. .30, heavy	29
0 Gun, submachine	29
0 Launcher, rocket, AT	14
0 Pistol, automatic	3
0 Rifle, M1	34
0 Trailer, ammunition, M10	4
0 Trailer, 1-ton	2
0 Truck, 4-ton	11
0 Truck, 2 1/2-ton, cargo, kitchen	1
8 Radio set, incl:	21
SCR-506	(2)
SCR-508	(2)
SCR-509	(3)
SCR-510	(14)

Notes:

- a - 1 Executive officer; 1 S-3.
- b - 1 S-2; 1 communication officer and assistant S-3 for air; 1 S-4.
- c - Armed with carbine.
- d - 1 S-1; 1 liaison officer.
- e - Of the 8 truck drivers, light, in this unit 2 are technician grade 5 and 6 are private first class and private.
- f - Drives truck, 4-ton.
- g - Mounted or carried on half-track.
- h - Drives half-track.
- i - Also cooks' helper.
- j - Mounted on truck, 2 1/2-ton.
- k - Of the 3 tank drivers in this company 2 are technician, grade 4 and 1 is technician, grade 5.
- r - Armed with rifle.
- s - Armed with gun, submachine.



Summary of personnel:

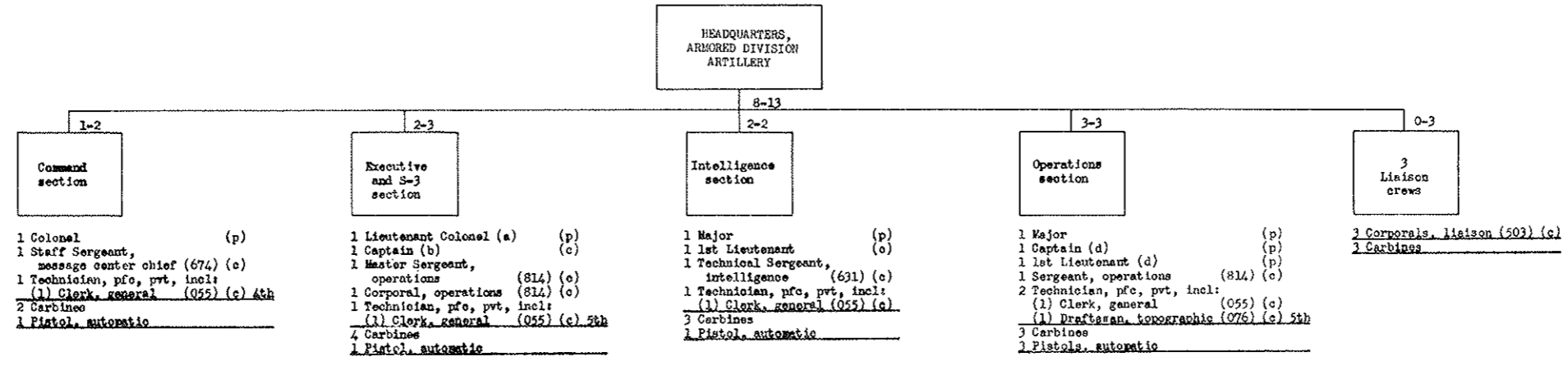
Captain	2
First Lieutenant	1
Second Lieutenant	1
Total commissioned	4
Warrant Officer	3
Master Sergeant	1
First Sergeant	1
Tech Sergeant	3
Staff Sergeant	5
Sergeant	2
Corporal	2
Technician, grade 4	13
Technician, grade 5	20
Private first class	8
Basic (included)	(6)
Total enlisted	68
Aggregate	75

Summary of vehicles, weapons and radios:

0 Carbine	53
0 Carrier, half-track, M3A1, w/o armament	1
0 Gun, machine, cal. .30, light	5
0 Gun, machine, HB, cal. .50, flex	6
0 Gun, submachine	22
0 Launcher, rocket, AT	6
0 Mortar, 81mm	1
0 Trailer, 1-ton	10
0 Trailer, ammunition, MIO	4
0 Truck, 1-ton	3
0 Truck, 3/4-ton, command	1
0 Truck, 3/4-ton, weapons carrier	1
0 Truck, 2 1/2-ton, cargo, incl:	14
Ammunition	(4)
Fuel and lubricants	(3)
Kitchen	(1)
Maintenance	(3)
Personnel and equipment	(1)
Rations	(1)
Water	(1)
0 Truck, heavy wrecker	1
0 Vehicle, tank recovery, w/o arm.	1
S Radio set, incl:	5
SCR-506	(1)
SCR-510	(2)
SCR-528	(1)
SCR-538	(1)

Notes:

- a - Assistant S-4 in addition to other duties.
- b - Drives truck, 3/4-ton.
- c - Armed with carbine.
- d - Drives truck, 1-ton.
- e - Drives truck, 2 1/2-ton.
- f - Mounted or carried on truck, 2 1/2-ton.
- g - Of the 11 truck drivers, light, in this company, 6 are technician, grade 5, and 5 are private, first class, or private.
- h - Clerical, general; personnel officer.
- i - Supply, general; assistant S-4.
- j - Battalion motor officer.
- k - Motor transport, general.
- m - 1 to have additional training as rigger (189).
- n - 1 drives half-track; 2 drive trucks, 2 1/2-ton.
- o - Drives recovery vehicle.
- p - 1 mounted on truck, 2 1/2-ton; 1 mounted on vehicle, tank recovery.
- q - 1 mounted on half-track; 1 mounted on vehicle, tank recovery; 1 mounted on truck, heavy wrecker.
- r - 1 carried on half-track; 1 carried on vehicle, tank recovery.
- s - Armed with gun, submachine.
- t - Mounted on vehicle, tank recovery.



Summary of personnel:

Colonel	1
Lieutenant Colonel	1
Major	2
Captain	2
1st Lieutenant	2
Total commissioned	8
Master Sergeant	1
Tech Sergeant	1
Staff Sergeant	1
Sergeant	1
Corporal	4
Technician, grade 4	1
Technician, grade 5	2
Private first class	1
Private	1
Total enlisted	13
Aggregate	21

Summary of weapons:

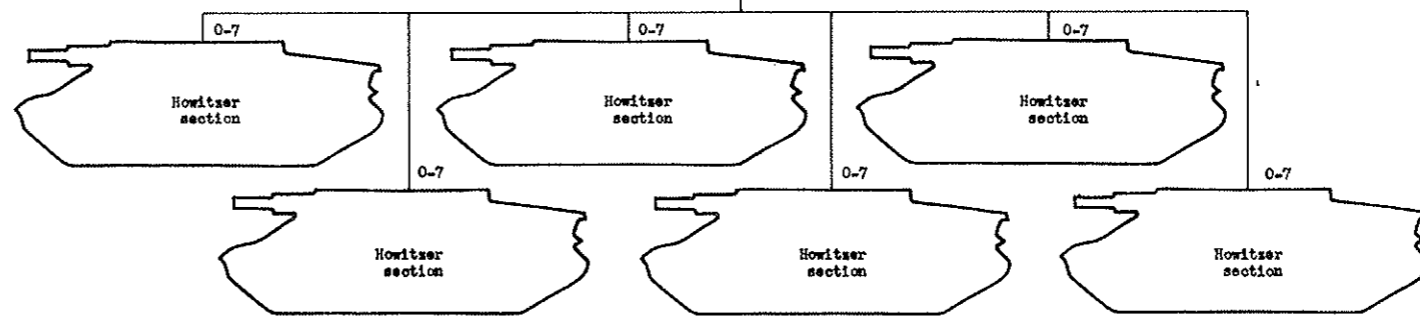
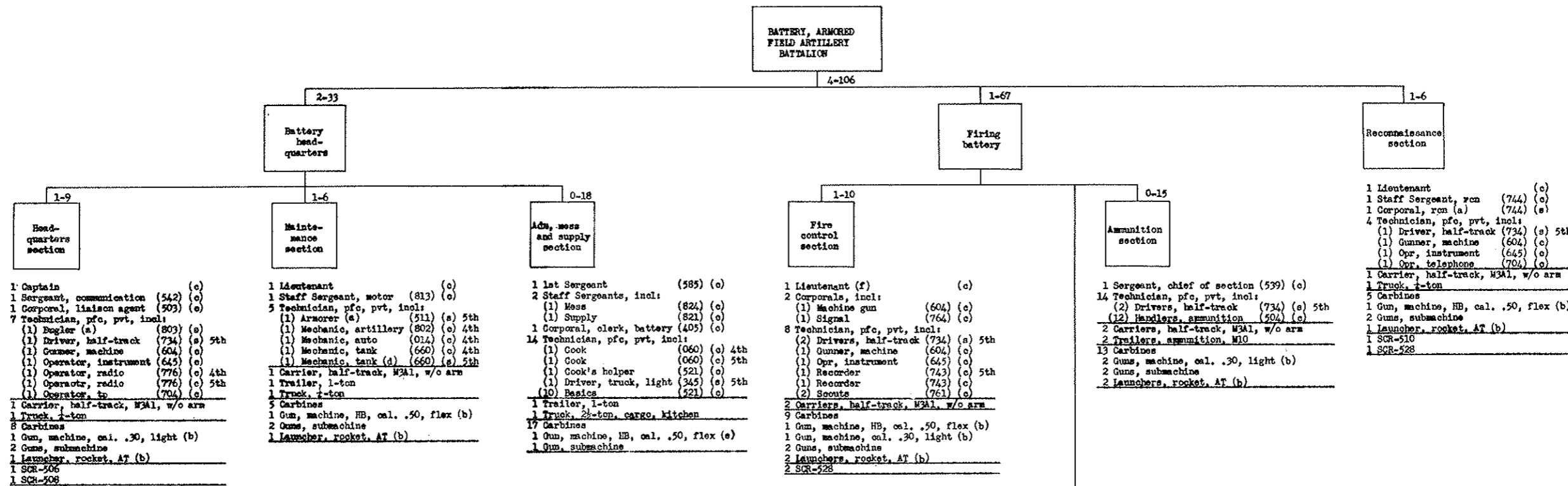
0 Carbine	15
0 Pistol, automatic	6

Notes:

a - Executive officer and S-3.
b - Assistant S-3.
c - Armed with carbine.
d - Field artillery liaison pilots (function as observers).
p - Armed with pistol.

This unit is attached to Division Headquarters Company for administration, mess and supply.

Equipment and additional personnel for Headquarters, Division Artillery Command included in transportation platoon, Headquarters Company, Armored Division (T/O 17-2).



Summary of personnel:

Captain	1
First Lieutenant	2
Second Lieutenant	1
Total commissioned	4
First Sergeant	1
Staff Sergeant	5
Sergeant	7
Corporal	11
Technician, grade 4	8
Technician, grade 5	15
Private first class	25
Private	34
Basic (included)	(10)
Total enlisted	106
Aggregate	110

Summary of vehicles, weapons and radios:

0 Carbine	93
0 Carriage, motor, 105mm howitzer	6
0 Carrier, half-track, M3A1, w/o arm	7
0 Gun, machine, HB, cal. .50, flex	4
0 Gun, machine, cal. .30, light	4
0 Gun, submachine	17
0 Launcher, rocket, AT	7
0 Trailer, ammunition, M10	8
0 Trailer, 1-ton	2
0 Truck, 1-ton	3
0 Truck, 2 1/2-ton, cargo, kitchen	1
0 Radio set, incl:	6
1 SCR-506	(1)
1 SCR-508	(1)
1 SCR-510	(1)
1 SCR-528	(3)

Notes:

- a - Drives truck, 1-ton.
- b - Mounted or carried on half-track.
- c - Armed with carbine.
- d - Drives half-track.
- e - Mounted on truck, 2 1/2-ton.
- f - Executive officer.
- g - Staff sergeant in one section only; sergeant in 5 sections.
- h - Of the 6 tank drivers in the battery, 3 are technician, grade 4 and 3 are technician, grade 5.
- a - Armed with submachine gun.

1 Staff Sergeant or Sergeant, chief of section (g) (539) (c)

1 Corporal, gunner (603) (c)

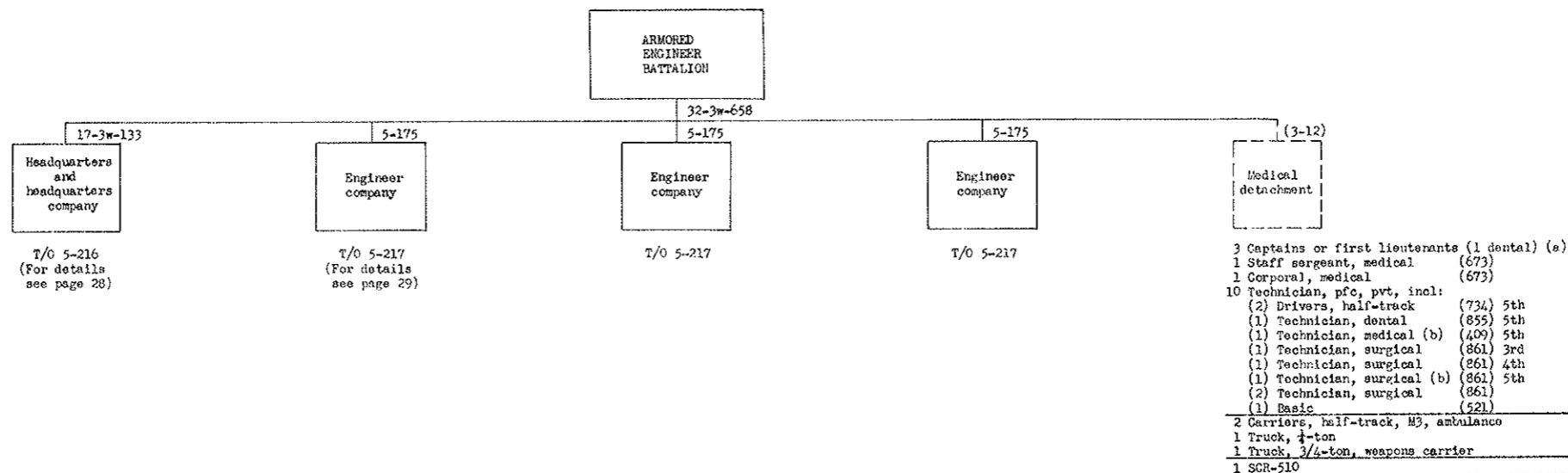
5 Technician, pfc, prt, incl: (4) Cannoneers (531) (c) (1) Driver, tank (h) (736) (a)

1 Carriage, motor, 105mm howitzer

1 Trailer, ammunition, M10

6 Carbines

1 Gun, submachine



Summary of personnel:

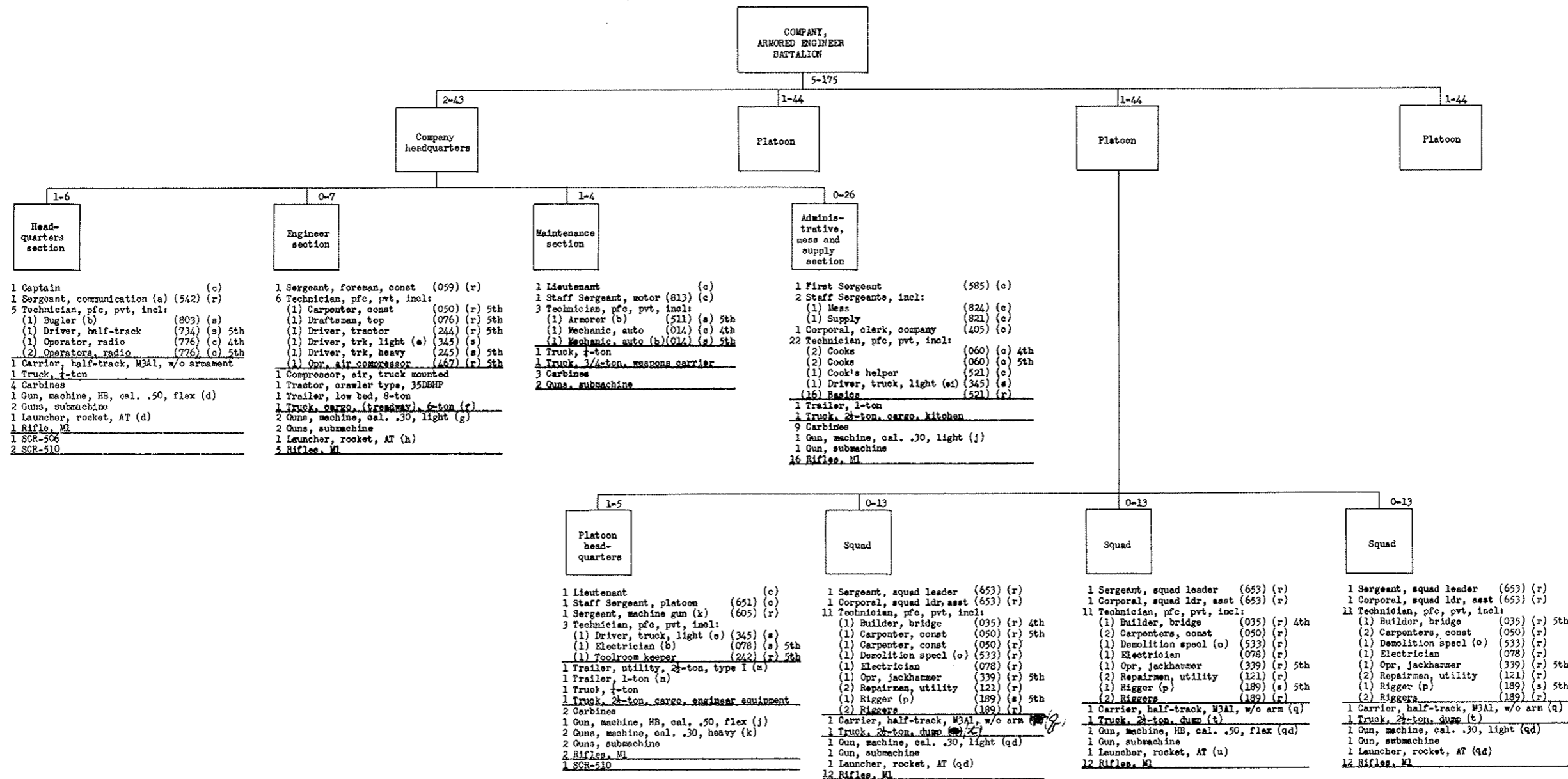
	Hq & Hq Co	3 Engr Co's (each)	Total Bn	attached medical	Aggregate
Lieutenant Colonel	1		1		1
Major	2		2		2
Captain	5	1	8		8
Captain or First Lieutenant				3	3
First Lieutenant	4	2	10		10
Second Lieutenant	5	2	11		11
Total commissioned	17	5	32	3	35
Warrant Officer	3		3		3
Master Sergeant	3		3		3
First Sergeant	1	1	4		4
Technical Sergeant	7		7		7
Staff Sergeant	10	6	28	1	29
Sergeant	3	14	45		45
Corporal	1	10	31	1	32
Technician, grade 3				1	1
Technician, grade 4	18	10	48	1	49
Technician, grade 5	42	48	186	5	191
Private, first class	18	35	123	1	124
Private	30	51	183	2	185
Basic (included)	(12)	(16)	(60)	(1)	(61)
Total enlisted	133	175	658	12	670
Aggregate	153	180	693	15	708

Summary of vehicles, weapons and radios:

	Hq & Hq Co	3 Engr Co's (each)	Total Bn	Attached medical	Aggregate
E Compressor, air, truck mounted	1	1	4		4
E Tractor, crawler type, 35 DBHP		1	3		3
E Trailer, low bed, 8-ton		1	3		3
E Trailer, utility, 2 1/2-ton, type I		3	9		9
E Truck, cargo, (treadway), 6-ton	3	1	6		6
E Water supply equipment, engineer	4		4		4
E Welding equipment, trailer mounted	1		1		1
O Carbine	87	22	153		153
O Carrier, half-track, M3al, w/o armament	3	4	15		15
O Carrier, half-track, M3, ambulance				2	2
O Gun, machine, M3, cal. .50, flex	5	5	20		20
O Gun, machine, cal. .30, light	5	5	20		20
O Gun, machine, cal. .30, heavy		6	18		18
O Gun, submachine	37	22	103		103
O Launcher, rocket, AT	8	7	29		29
O Pistol, automatic	3		3		3
O Rifle, M1	26	136	434		434
O Trailer, 1-ton	12	4	24		24
O Trailer, ammunition, M10	2		2		2
O Truck, 1-ton	10	5	25	1	26
O Truck, 3/4-ton, command	1		1		1
O Truck, 3/4-ton, weapons carrier	3	1	6	1	7
O Truck, 2 1/2-ton, cargo	15	4	27		27
O Truck, 2 1/2-ton, dump		6	18		18
O Truck, heavy wrecker	1		1		1
S Radio set, including:	12	6	30	1	31
SCR-506	(3)	(1)	(6)		(6)
SCR-510	(6)	(5)	(21)	(1)	(22)
SCR-528	(3)		(3)		(3)

Notes:

- a - To be furnished only as required and available within the continental limits of the United States. Will be furnished prior to departure for overseas duty.
- b - Drives truck, 3/4-ton or 1/4-ton.



SUMMARY of personnel:

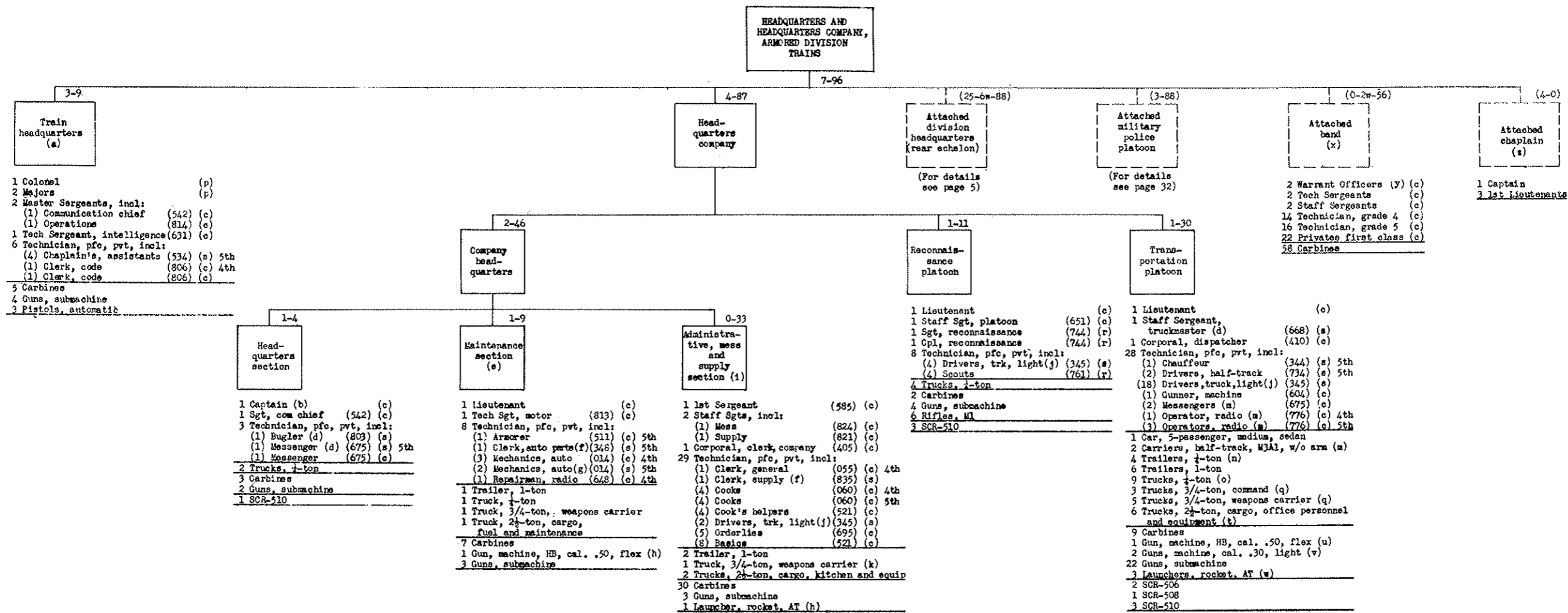
Captain	1
1st Lieutenant	2
2nd Lieutenant	2
Total commissioned	5
1st Sergeant	1
Staff Sergeant	6
Sergeant	14
Corporal	10
Technician, grade 4	10
Technician, grade 5	42
Private first class	39
Private	51
Basics (included)	(16)
Total enlisted	175
Aggregate	180

SUMMARY of vehicles, weapons and radios:

E Compressor, air, truck mounted	1
E Tractor, crawler type, 35DBHP	1
E Trailer, low bed, 8-ton	1
E Trailer, utility, 2 1/2-ton, type I	3
E Truck, cargo, (treadway), 6-ton	1
O Carbine	22
O Carrier, half-track, M3A1, w/o arm	4
O Gun, machine, HB, cal. .50, flex	5
O Gun, machine, cal. .30, heavy	6
O Gun, machine, cal. .30, light	5
O Gun, submachine	22
O Launcher, rocket, AT	7
O Rifle, M1	136
O Trailer, 1-ton	4
O Truck, 1-ton	5
O Truck, 3/4-ton, weapons carrier	1
O Truck, 2-ton, cargo, including Engineer equipment	4
Kitchen	(3)
O Truck, 2-ton, dump	(1)
S Radio set, incl:	6
SCR-506	(1)
SCR-510	(5)

Notes:

- a - Also reconnaissance sergeant.
- b - Drives truck, 1-ton or 3/4-ton.
- c - Armed with carbine.
- d - Mounted or carried on half-track.
- e - Of 5 truck drivers, light, in this company 3 are technician grade 5 and 2 are private first class or private.
- f - Prime mover for tractor and trailer.
- g - Mounted on air compressor and bridge trucks.
- h - Carried on bridge truck.
- i - Also cook's helper.
- j - Mounted on truck, 2 1/2-ton.
- k - Employed with squads in defense of road blocks, etc.
- m - For bridge material, towed by one of the squad trucks or half-tracks.
- n - For engineer equipment.
- o - Of 9 demolition specialists in this company, 3 are technician grade 5 and 6 are private first class or private.
- p - Drives truck, 2 1/2-ton, or half-track.
- q - In 1 platoon only.
- r - Armed with rifle.
- s - Armed with gun, submachine.
- t - In 2 platoons only.
- u - Carried in truck or half-track.



Summary of personnel:

	Hq and div co	Atchd div hq (rear echelon)	Atchd M P platoon	Atchd band	Atchd chaplain	Aggregate
Colonel	1					1
Lieutenant Colonel		7				7
Major	2	6	1			9
Major or Captain		1				1
Captain	1	9		1		11
First Lieutenant	1	2	1	3		7
Second Lieutenant	2		1			3
Total commissioned	7	25	3	4		39
Warrant Officer		6		2		8
Master Sergeant	2	5				7
First Sergeant	1					1
Tech Sergeant	2	7	1			12
Staff Sergeant	4	1	3	2		10
Sergeant	2	7	6			15
Corporal	3	1	7			11
Technician, grade 3		10				10
Technician, grade 4	11	31	1	14		57
Technician, grade 5	27	24	2	16		69
Private first class	18	2	30	22		72
Private	26		38			64
Basic (included)	(8)		(8)			(16)
Total enlisted	96	88	88	56		328
Aggregate	103	119	91	58	4	375

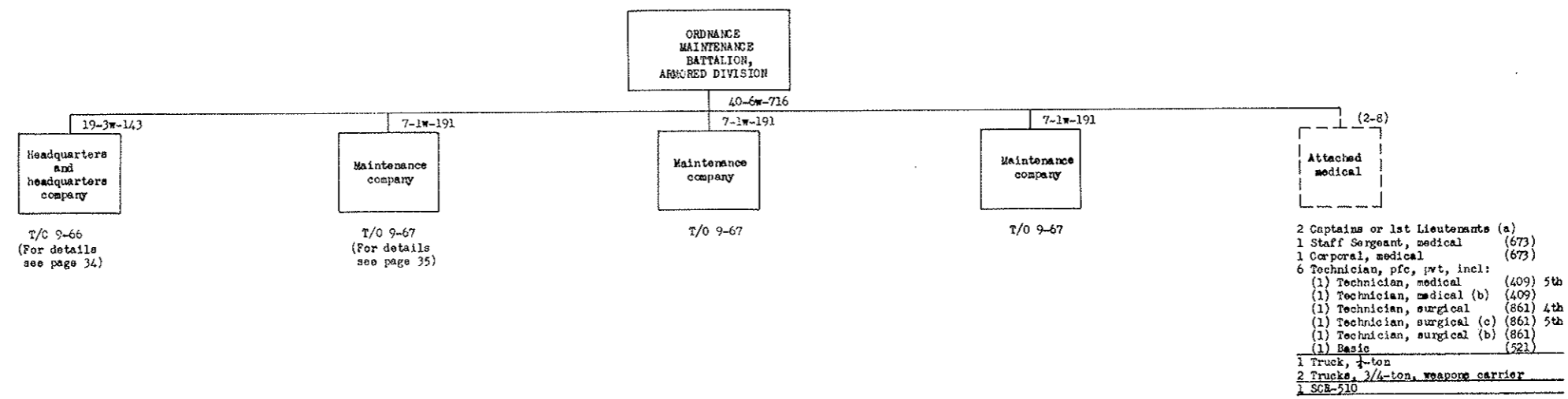
Summary of vehicles, weapons and radios:

	Hq and div co	Atchd div hq (rear echelon)	Atchd M P platoon	Atchd band	Aggregate
0 Car, 5-passenger, medium, sedan	1				1
0 Carbine	56	99	67	58	280
0 Carrier, half-track, M3A1, w/o armament	2		1		3
0 Gun, machine, HB, cal. .50, flex	2		1		3
0 Gun, machine, cal. .30, light	2				2
0 Gun, submachine	38		23		61
0 Launcher, rocket, AT	4		1		5
0 Pistol, automatic	3	8	1		12
0 Rifle, M1	6				6
0 Trailer, 1/2-ton	4				4
0 Trailer, 1-ton	9				9
0 Truck, 1-ton	16		19		35
0 Truck, 3/4-ton, command	3				3
0 Truck, 3/4-ton, weapons carrier	7		3		10
0 Truck, 2 1/2-ton, cargo, incl: <ul style="list-style-type: none"> Fuel and maintenance (1) Kitchen and equipment (2) Office personnel and equipment (6) 	9			9	
S Radio set, incl: <ul style="list-style-type: none"> SCR-506 (2) SCR-508 (1) SCR-510 (7) 	10			10	

Notes:

- a - Vehicles, drivers, radio operators and messengers provided in transportation platoon.
- b - Assistant to headquarters commandant for division headquarters, rear echelon.
- c - Armed with carbine.
- d - Drives truck, 1-ton.
- e - Performs next echelon of maintenance for military police platoon.
- f - Drives truck, 3/4-ton.
- g - 1 drives truck, 1-ton; 1 drives truck, 2 1/2-ton.
- h - Mounted or carried on truck, 2 1/2-ton.
- i - Also furnishes supply and mess facilities for division headquarters, rear echelon, military police platoon and band.
- j - Of the 24 truck drivers, light, in this company, 8 are technician, grade 5, and 16 are privates first class or private.
- k - For supply of attached division headquarters, rear echelon.
- m - For train headquarters.
- n - ~~For train headquarters.~~ *When authorized by theater of operations*
- o - 1 for train headquarters; 1 for attached chaplain; 1 for attached chaplain's assistants; 3 for division headquarters, rear echelon; 1 for transportation platoon. *When authorized.*
- p - Armed with pistol.
- q - For division headquarters, rear echelon.
- r - Armed with rifle.
- s - Armed with gun, submachine
- t - For division headquarters, rear echelon and band.
- u - Mounted on half-track.
- v - 1 mounted on half-track; 1 mounted on truck, 2 1/2-ton.
- w - 2 Carried on half-tracks; 1 carried on truck, 2 1/2-ton.
- x - Transportation provided in transportation platoon, headquarters company, armored division trains.
- y - 1 Chief Warrant Officer; band leader; 1 Warrant Officer (J.G.), band leader.
- z - For trains and for reinforcing of combat commands as required.

Comments, for Attached Chaplains



Summary of personnel:

	Hq and hq co	3 Main- tenance companies (each)	Total bn	Atchd medical	Aggregate
Lieutenant Colonel	1		1		1
Major	4		4		4
Captain	5	1	8		8
Captain or 1st Lieutenant				2	2
1st Lieutenant	7	4	19		19
2nd Lieutenant	2	2	8		8
Total commissioned	19	7	40	2	42
Warrant Officer	3	1	6		6
Master Sergeant	4	1	7		7
First Sergeant	1	1	4		4
Technical Sergeant	12	7	33		33
Staff Sergeant	14	9	41	1	42
Sergeant	3	3	12		12
Corporal	2	1	5	1	6
Technician, grade 3	1	11	34		34
Technician, grade 4	26	42	152	1	153
Technician, grade 5	36	64	228	2	230
Private first class	16	18	70	1	71
Private	28	34	130	2	132
Basic (included)	(13)	(17)	(64)	(1)	(65)
Total enlisted	143	191	716	8	724
Aggregate	165	199	762	10	772

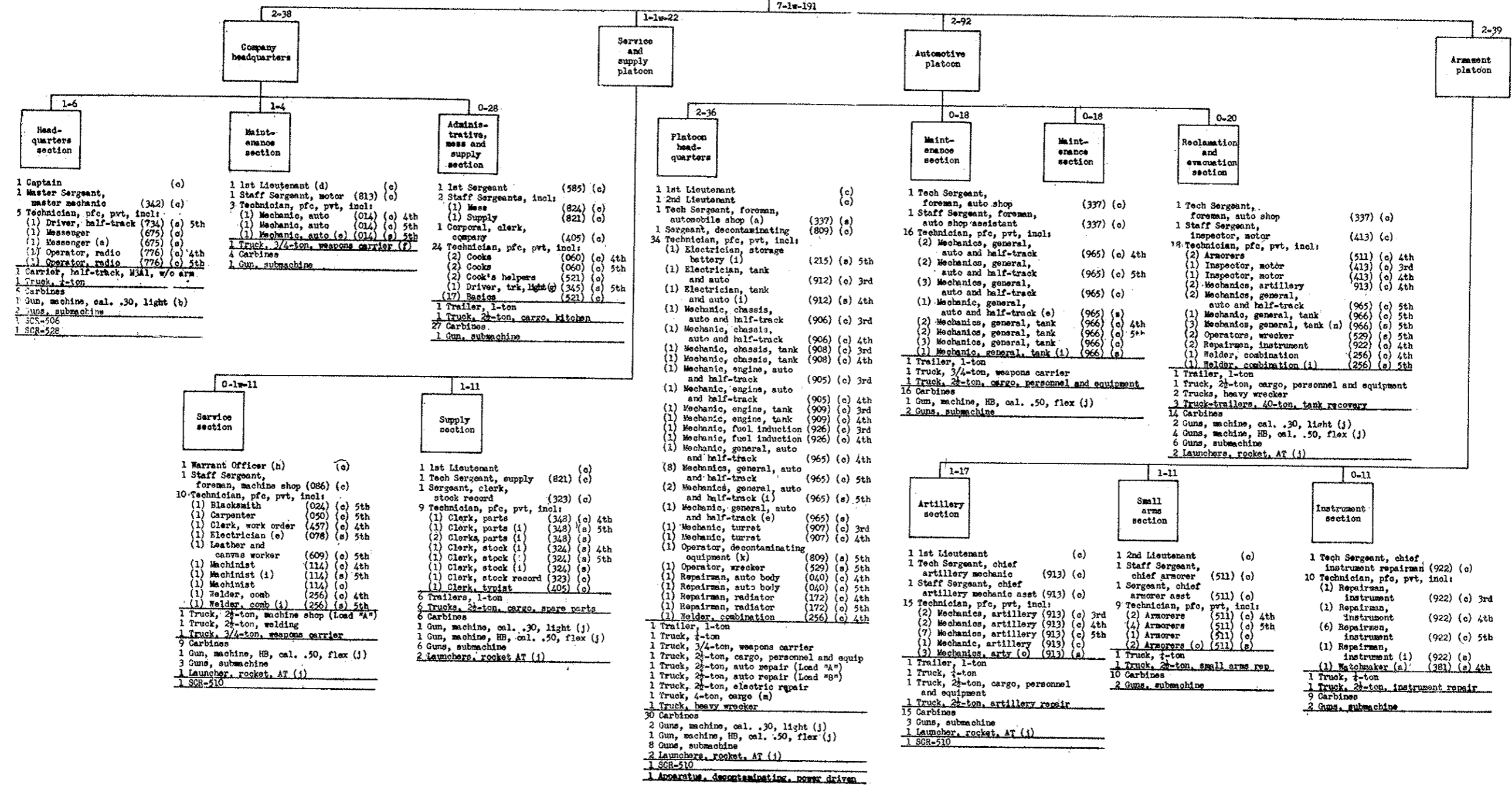
Summary of vehicles, weapons and radios:

	Hq and hq co	3 Main- tenance companies (each)	Total bn	Atchd medical	Aggregate
O Carbine	109	161	592		592
O Carrier, half-track, M3A1, w/o armor	1	1	4		4
O Gun, machine, cal, .30, light	10	6	28		28
O Gun, machine, HB, cal, .50, flexible	11	9	38		38
O Gun, submachine	51	38	165		165
O Launcher, rocket, AT	11	8	35		35
O Pistol, automatic	5		5		5
O Trailer, 1-ton	30	12	66		66
O Truck, 1/4-ton	8	5	23	1	24
O Truck, 3/4-ton, command	3		3		3
O Truck, 3/4-ton, weapons carrier	1	5	16	2	18
O Truck, 2 1/2-ton, artillery repair		1	3		3
O Truck, 2 1/2-ton, auto repair, (Load "A")		1	3		3
O Truck, 2 1/2-ton, auto repair, (Load "B")		1	3		3
O Truck, 2 1/2-ton, cargo	31	12	67		67
O Truck, 2 1/2-ton, electrical repair		1	3		3
O Truck, 2 1/2-ton, instrument repair		1	3		3
O Truck, 2 1/2-ton, machine shop, (Load "A")	1	1	4		4
O Truck, 2 1/2-ton, machine shop, (Load "B")	1		1		1
O Truck, 2 1/2-ton, machine shop, (Load "C")	1		1		1
O Truck, 2 1/2-ton, machine shop, (Load "D")	1		1		1
O Truck, 2 1/2-ton, small arms repair		1	3		3
O Truck, 2 1/2-ton, welding	1	1	4		4
O Truck, 4-ton, cargo		1	3		3
O Truck, trailer, 40-ton, tank recovery		3	9		9
O Truck, heavy wrecker	2	3	11		11
S Radio set, incl:	6	5	21	1	22
SCR-506	(3)	(1)	(6)		(6)
SCR-510	(2)	(3)	(11)	(1)	(12)
SCR-528	(1)	(1)	(4)		(4)
W Apparatus, decontaminating, power driven		1	3		3

Notes:

- a - To be furnished only as required and available within the continental limits of the United States. Will be furnished prior to departure for overseas duty.
- b - Drives 3/4-ton truck.
- c - Drives 1/4-ton truck.

MAINTENANCE COMPANY,
ORDNANCE MAINTENANCE
BATTALION



Summary of personnel:

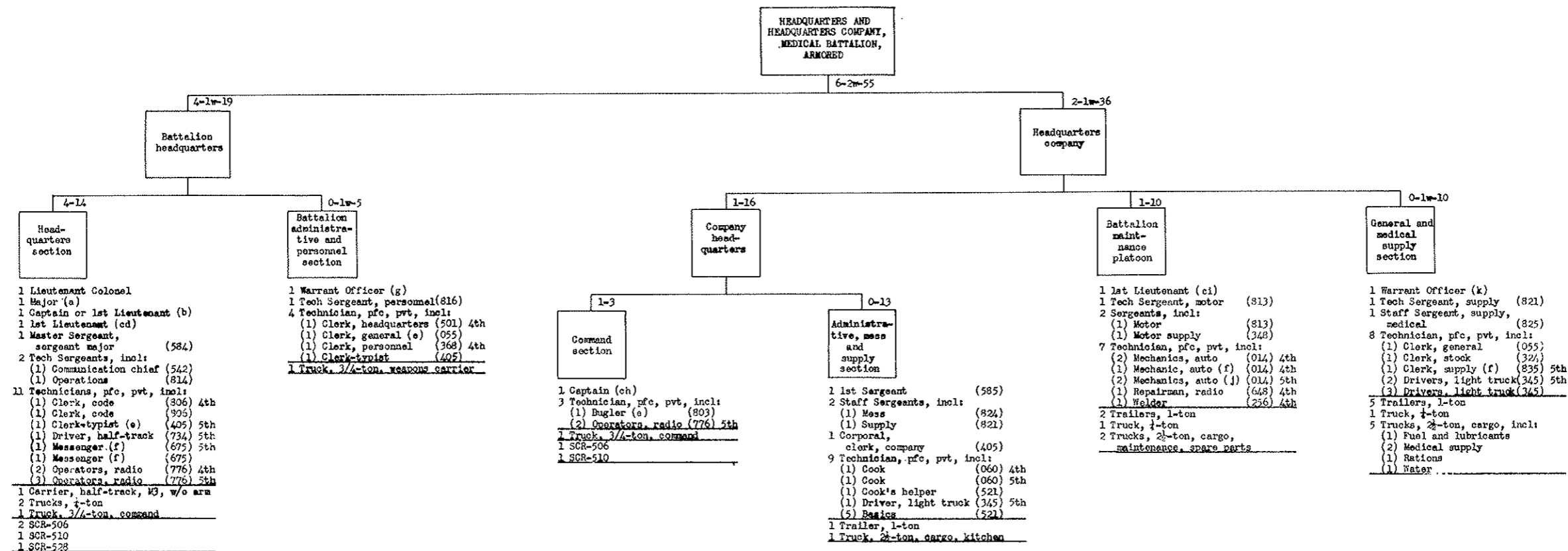
Captain	1
1st Lieutenant	4
2nd Lieutenant	2
Total commissioned	7
Warrant Officer	1
Master Sergeant	1
1st Sergeant	1
Tech Sergeant	7
Staff Sergeant	9
Sergeant	3
Corporal	1
Technician, grade 3	11
Technician, grade 4	42
Technician, grade 5	64
Private first class	18
Private	34
Basic (included)	(17)
Total enlisted	191
Aggregate	199

Summary of vehicles, weapons and radios:

0 Carbine	161
0 Carrier, half-track, M31, without armament	1
0 Gun, machine, cal. .30, light	6
0 Gun, machine, HB, cal. .50, flex	9
0 Gun, submachine	38
0 Launcher, rocket, AT	8
0 Trailer, 1-ton	12
0 Truck, 1-ton	5
0 Truck, 3/4-ton, weapons carrier	5
0 Truck, 2 1/2-ton, cargo, including:	12
(1) Kitchen	(1)
Personnel and equipment	(5)
Spare parts	(6)
0 Truck, 2 1/2-ton, artillery repair	1
0 Truck, 2 1/2-ton, automotive repair (Load "A")	1

0 Truck, 2 1/2-ton, automotive repair (Load "B")	1
0 Truck, 2 1/2-ton, electric repair	1
0 Truck, 2 1/2-ton, instrument repair	1
0 Truck, 2 1/2-ton, machine shop (Load "A")	1
0 Truck, 2 1/2-ton, small arms repair	1
0 Truck, 2 1/2-ton, welding	1
0 Truck, 4 ton, cargo	1
0 Truck, heavy wrecker	3
0 Truck-trailer, 40-ton, tank recovery	3
B Radio set, including SCR-506	5
SCR-510	(1)
SCR-510	(3)
SCR-528	(1)
W Apparatus, decontaminating, power driven	2

- Notes:
- a - Drives truck, 1-ton
 - b - Mounted on half-track.
 - c - Armed with carbines.
 - d - Company motor and executive officer.
 - e - Drives truck, 3/4-ton.
 - f - Carries second echelon tool set No. 1.
 - g - Also cooks' helper.
 - h - Munitions, armament, machinist.
 - i - Drives truck, 2 1/2-ton.
 - j - Mounted or carried on truck, 2 1/2-ton, or larger.
 - k - Drives truck, 4-ton.
 - m - Carries apparatus, decontaminating, power-driven, M4.
 - n - Drive truck-trailers, 40-ton, tank recovery.
 - o - Drive trucks.
 - s - Armed with gun, submachine.



Summary of personnel:

Lieutenant Colonel	1
Major	1
Captain	1
Captain or 1st Lieutenant	1
1st Lieutenant	2
Total commissioned	6
Warrant Officer	2
Master Sergeant	1
1st Sergeant	1
Technical Sergeant	5
Staff Sergeant	3
Sergeant	2
Corporal	1
Technician, grade 4	11
Technician, grade 5	15
Private, first class	6
Private	10
Basic (included)	(5)
Total enlisted	55
Aggregate	63

Summary of vehicles and radios:

0 Carrier, half-track, M3, without armament	1
0 Trailer, 1-ton	8
0 Truck, 1-ton	4
0 Truck, 3/4-ton, command	2
0 Truck, 3/4-ton, weapons carrier	1
0 Truck, 2-ton, cargo, incl.	8
Fuel and lubricants	(1)
Kitchen	(1)
Maintenance, spare parts	(2)
Medical supply	(2)
Rations	(1)
Water	(1)
3 Radio set, incl.	6
SCR-506	(3)
SCR-510	(2)
SCR-528	(1)

Notes:

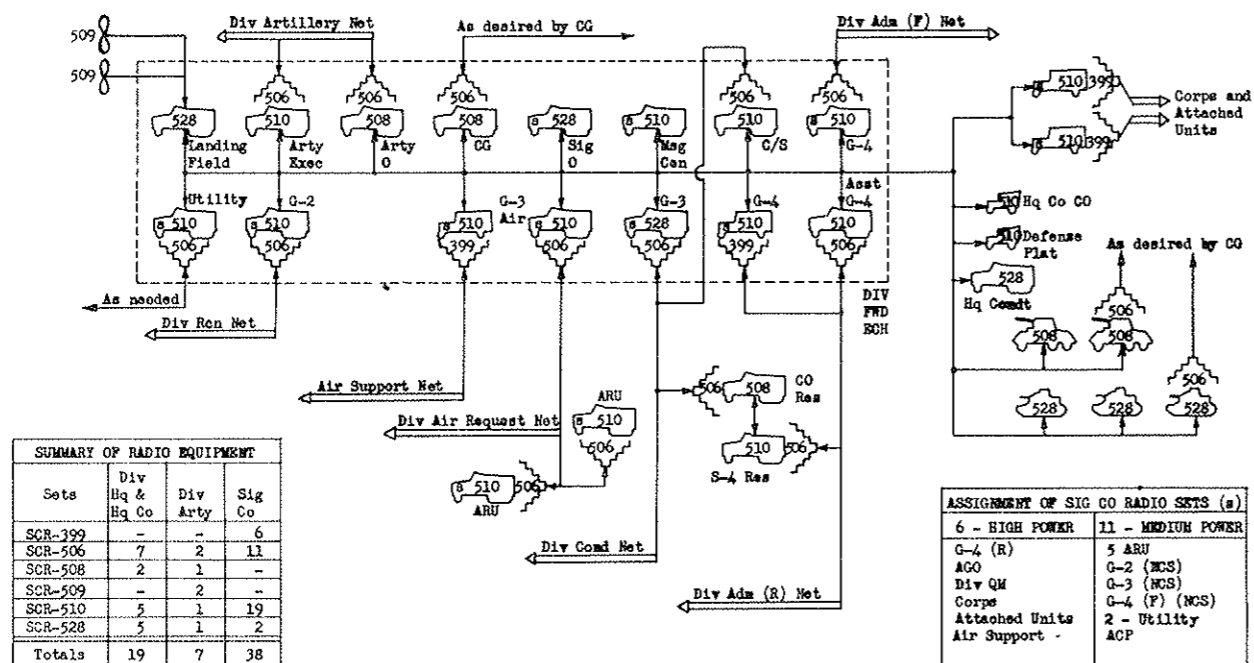
- a - Executive officer.
- b - S-3.
- c - Medical administrative corps.
- d - S-1.
- e - Drives truck, 3/4-ton.
- f - Drives truck, 1-ton.
- g - Clerical, general; personnel adjutant.
- h - S-4 and company commander.
- i - Motor officer.
- j - Drive trucks, 2-ton.
- k - Supply, medical.

ARMORED DIVISION

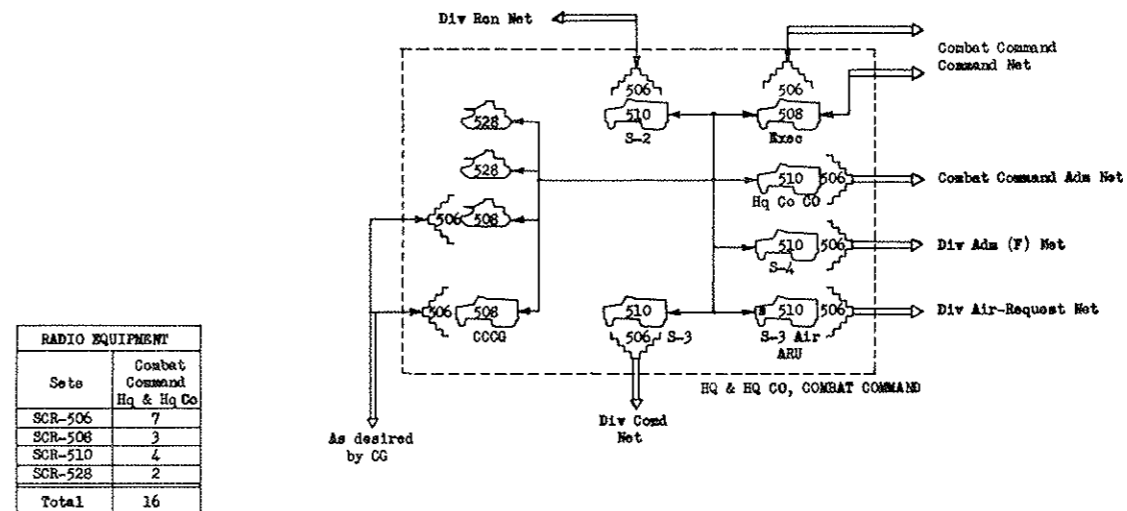
RADIO CHANNELS OF COMMUNICATION

SERIES C

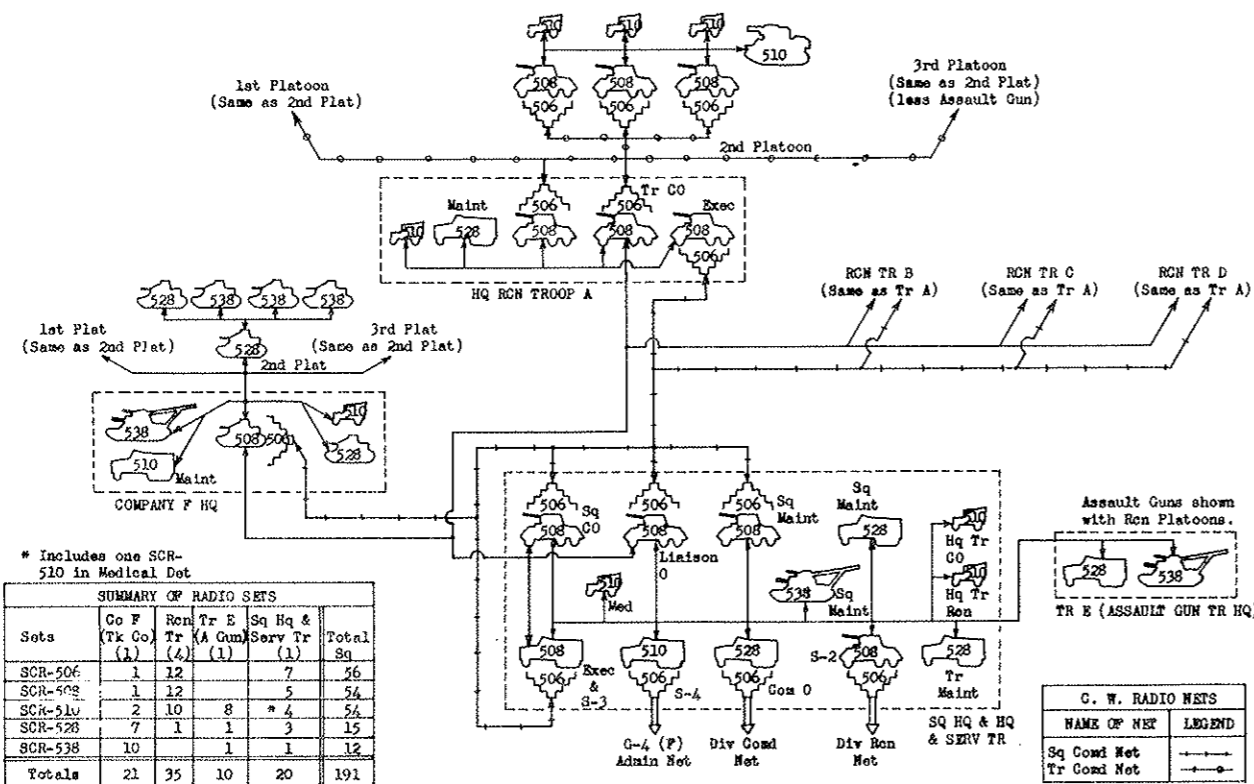
HEADQUARTERS ARMORED DIVISION



HEADQUARTERS AND HEADQUARTERS COMPANY COMBAT COMMAND



CAVALRY RECONNAISSANCE SQUADRON, MECHANIZED



TANK BATTALION

